



Architectural Hardware Fittings



We are
Always pursuing
The safety
And comfort
For your life!

www.kanzhardware.com

GRAZIA
SERIES

Edition 09

KANZ PROFESSIONAL DOOR CONTROL HARDWARE SERVICES

KANZ OVERSEAS is one of the largest & India's growing Architectural Hardware System Company with six branches/representative offices and have over hundred employees. The company has achieved rapid success in the past few year.

The essence of **KANZ** success lies in the expertise of its fine team of Professional, strong relationships with associates and the ability to adopt quickly and efficiently, with the vision to always think a head.

In **KANZ** we have been able to align our core business processes with appropriate technology in order to formulate a better decision support system.

Quality : We are committed to continous improvement in our products and service through innovative technology, meaningful human resource development, installation of quality management system of national / international standards, establishing and reviewing quality objectives for superior customer value and aspirations.

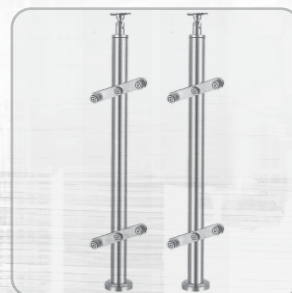
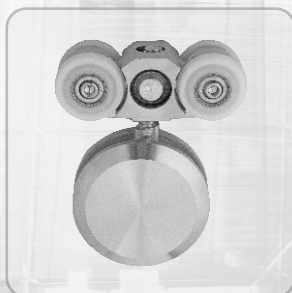
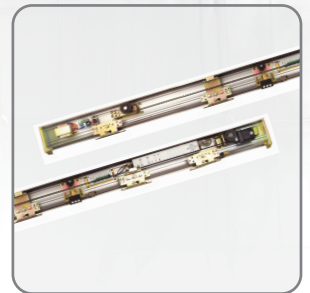
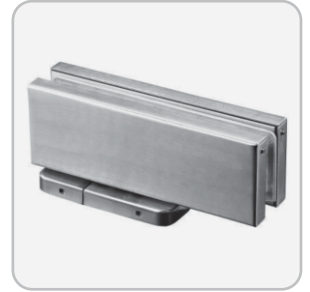
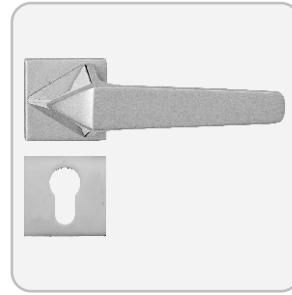
Mission : To retain market leadership by constantly innovating outstanding quality products and services that delight customers.

Finally : we have been able to achieve higher levels of operational efficiency by better production, inventory planning and effective budgetary controls. The aim is to maximize the creativity and enhance the brand value.



INDEX

- Concealed Floor Spring
- Patch Fitting
- Floor Hinge
- Door Closer
- Shower Cubicle Fitting
- Glass Door Sliding System
- Sliding Folding System
- Railing Balustrade
- Spider Fitting
- Automatic Sliding & Swing Door System
- Mortise Door Handle

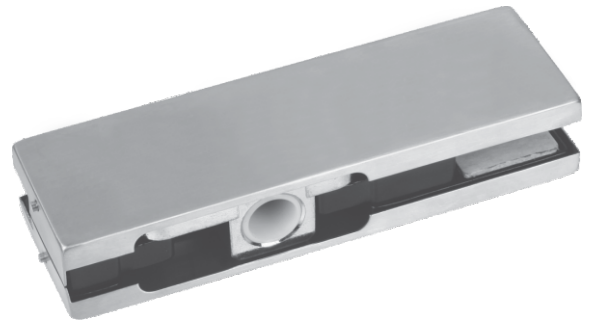


ARCHITECTURAL HARDWARE SOLUTIONS



CONCEALED FLOOR SPRING

KZ-CFH-105

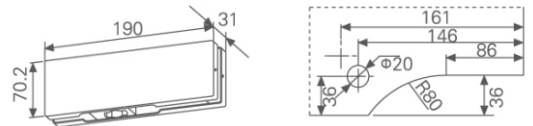
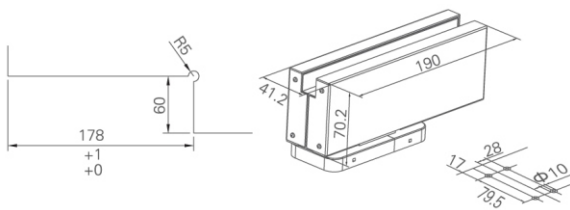


Specifications

- With SS 304 cover of 1.5mm thickness
- Max door width 1000mm
- Max door weight 100 kg
- Max door opening angle 130

Specifications

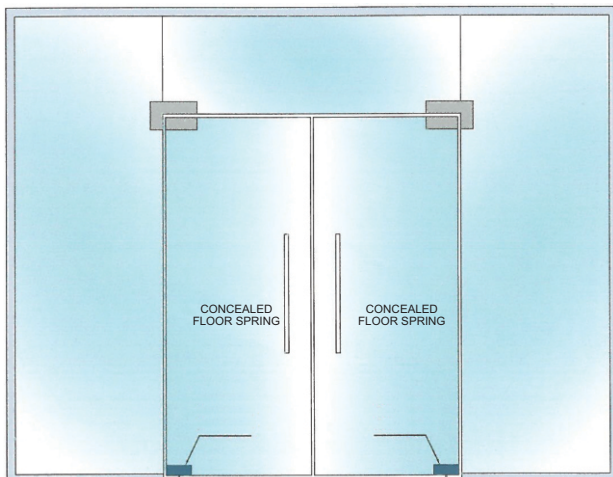
- With SS 304 cover of 1.5mm thickness



1 Max. opening angle: 150° for left and right opening (double action)
Hold open at 90°

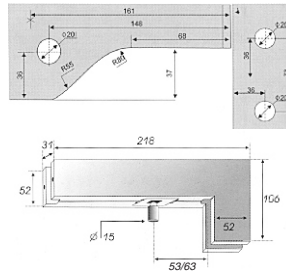
2 Two speed adjustment
Closing Speed (150° ~ 10°)
Braking speed (10° ~ 0°)

3 With high efficiency over 70%, light opening yet with smooth closing



GLASS DOOR PATCH FITTING SERIES

KZ-PF-1 BIG L PATCH

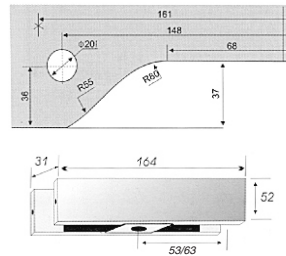
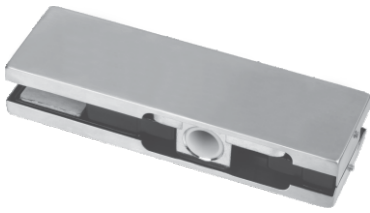


Specifications

Over Panel Side Panel Connecting Patch:

- With SS 304 cover of 1.5mm thickness
- Adjustable pivot point of 53/63mm
- Finish : SS
- Connects over panel and side panel

KZ-PF-2 TOP PATCH

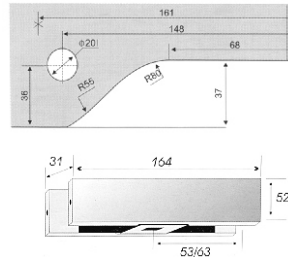


Specifications

Top Patch :

- With SS 304 cover of 1.5mm thickness
- Finish : SS
- Secured on to the door leaf top to accept the spindle of KPF-1 with a plastic socket of 15.2mm diameter.

KZ-PF-3 BOTTOM PATCH

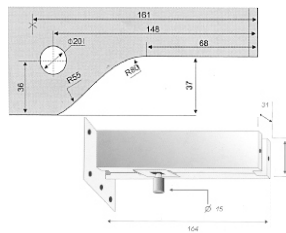


Specifications

Bottom Patch :

- With SS 304 cover of 1.5mm thickness
- Finish : SS
- Secured on to the bottom of the door leaf to accept the spindle of Kanz floor springs or the floor springs of any other reputed manufacturers.

KZ-PF-4 OVER PANEL PATCH

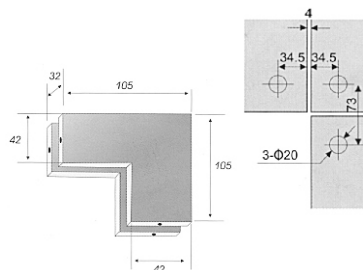


Specifications

Over Panel Patch secured on the side wall :

- With SS 304 cover of 1.5mm thickness
- Cover secured with small L key
- Ensures that the cover is secure in its place
- Finish : SS
- To secure over panel with the wall with a pivot pin of 15mm diameter

KZ-PF-610 SMALL-L PATCH

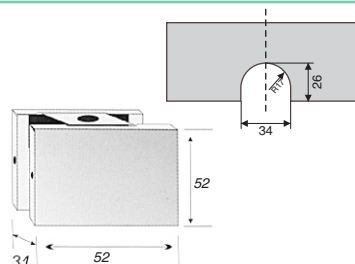
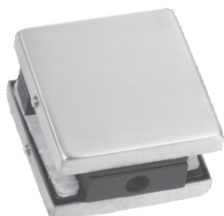


Specifications

Over Panel and Side Panel Connector:

- With SS 304 cover of 1.5mm thickness
- Finish : SS
- Patch to secure the over panel and side panel at the opening edge of the door

KZ-PF-640 STANDARD PATCH FITTING



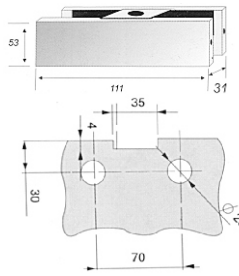
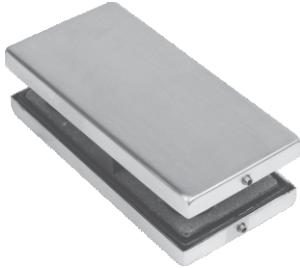
Specifications

Glass clamping connector :

- With SS 304 cover of 1.5mm thickness
- Finish : SS
- To secure glass with fixed structure (ceiling, floor or wall)

CONCEALED FLOOR SPRING

KZ-PF-650 STANDARD PATCH FITTING

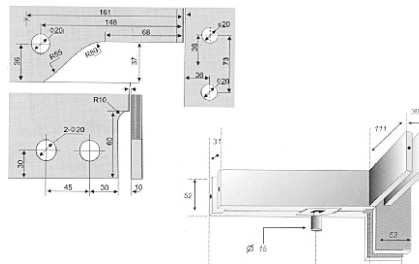


Specifications

Glass to Glass Connecting Patch :

- With SS 304 cover of 1.5mm thickness
- Finish : SS
- To hold two glasses together and securing this with a fixed structure like floor wall or ceiling

KZ-PF-41 LR STANDARD PATCH FITTING

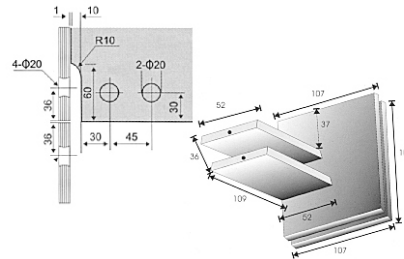


Specifications

Over Panel Side Panel Connector With fin fitting right/left :

- With SS 304 cover of 1.5mm thickness
- Ensures that the cover is secure in its place
- Finish : SS
- Connecting over panel and side panel. To be used with a fin.

KZ-PF-620F STANDARD PATCH FITTING

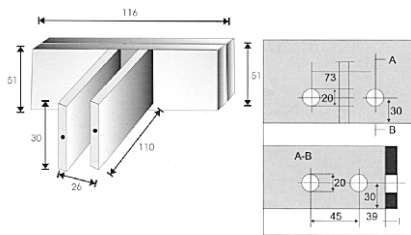
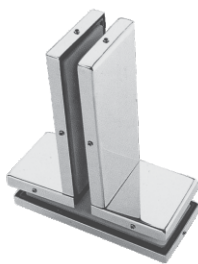


Specifications

Quadraple Connector with Fin :

- Ensures that the cover is secure in its place
- Finish : SS
- Integrating four glasses and connecting with a fin

KZ-PF-630 STANDARD PATCH FITTING

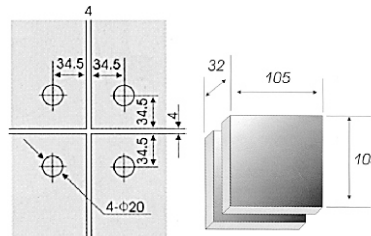
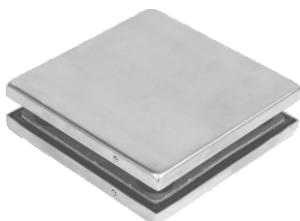


Specifications

Double Glass Connector with Fin fitting Inside :

- With SS 304 cover of 1.5mm thickness
- Connecting two glasses in a line with a fin
- Finish : SS

KZ-PF-620 STANDARD PATCH FITTING

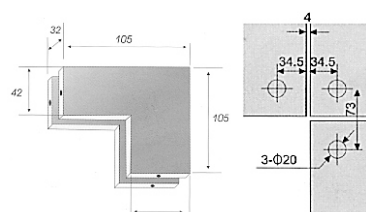
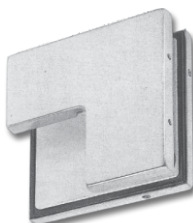


Specifications

Quadraple Connector :

- With SS 304 cover of 1.5mm thickness
- Cover secured with small L key
- Ensures that the cover is secure in its place
- Finish : SS
- For integrating a maximum of four number of fixed glasses

KZ-PF-610ST STANDARD PATCH FITTING



Specifications

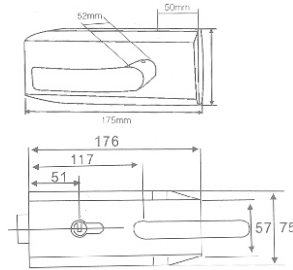
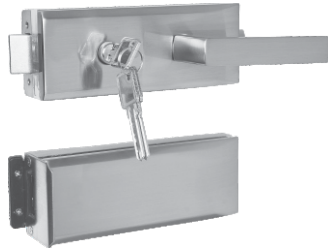
Over Panel and Side Panel Connector:

- With SS 304 cover of 1.5mm thickness
- Finish : SS
- Patch to secure the over panel and side panel at the opening edge of the door

GLASS DOOR PATCH FITTING SERIES

KZ-PL-44

DOUBLE DOOR SINGLE LOCK



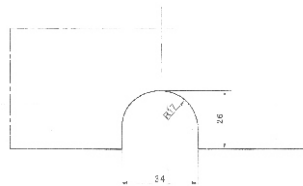
Specifications

Double Door Single Lock Head :

- Suitable for toughened glass door with a thickness of 10-12mm

KZ-PL-45

THUMB TURN LOCK



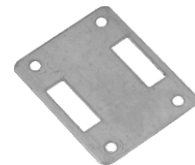
Specifications

Thumb turn lock and strike box :

- Locking with the help of thumb turn
- Bolt projection of 10mm(single throw)
- With SS 304 cover of 1.5mm thickness
- Finish: SS

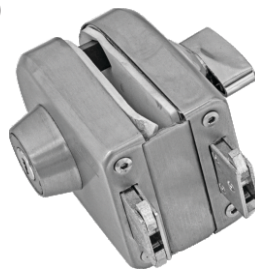
KZ-PL-47

OVAL SHAPE LOCK (W2G)



KZ-PL-48

OVAL SHAPE LOCK (G2G)



KZ-PL-49

GLASS DOOR LOCK (W2G)



Specifications

Glass Door Handle Lock :

- Material: stainless steel/Alloy/Iron
- Suited door thickness: 8-12mm toughened glass
- Finishing: Satin/polish
- No hole or cutout required on glass

KZ-PL-50

GLASS DOOR LOCK (G2G)



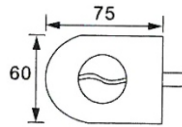
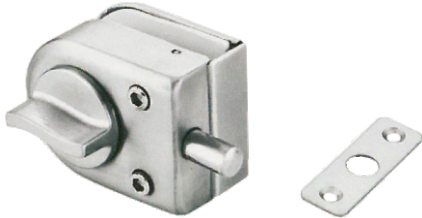
Specifications

Glass Door Handle Lock :

- Material: stainless steel/Alloy/Iron
- Suited door thickness: 8-12mm toughened glass
- Finishing: Satin/polish
- No hole or cutout required on glass

GLASS DOOR LOCKS

KZ-PL-51 KNOB LOCK (W2G)

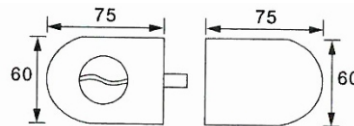


Specifications

The function instruction:

- Tapered edge. Brass lock cylinder with brass key.
- 300,00 times, mutual opening rate is eight-hundredth.
- With SS 304 cover of 1.5mm thickness
- For side-hung glass door of office building or top-gradr chamber.
- Direct installation without cutting hole. Ensures stability and firm.
- Door thickness 12mm

KZ-PL-52 KNOB LOCK (G2G)

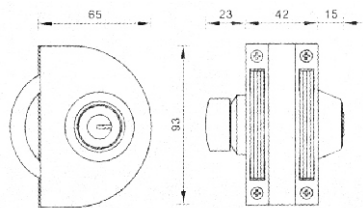
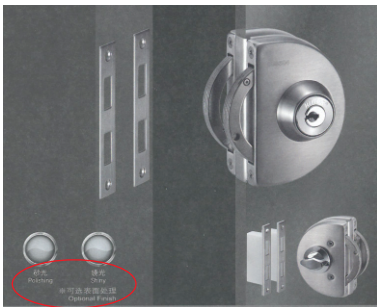


Specifications

The function instruction:

- Tapered edge. Brass lock cylinder with brass key.
- 300,00 times, mutual opening rate is eight-hundredth.
- With SS 304 cover of 1.5mm thickness
- For side-hung glass door of office building or top-gradr chamber.
- Direct installation without cutting hole. Ensures stability and firm.
- Door thickness 12mm

KZ-PL-53 D-SHAPE-LOCK (W2G)

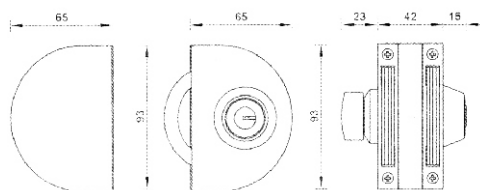
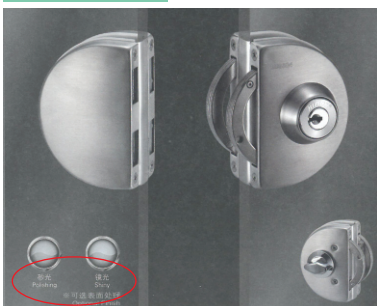


Specifications

The function instruction:

- Tapered edge. Brass lock cylinder with brass key.
- 300,00 times, mutual opening rate is eight-hundredth.
- With SS 304 cover of 1.5mm thickness
- For side-hung glass door of office building or top-gradr chamber.
- Direct installation without cutting hole. Ensures stability and firm.
- Door thickness 12mm

KZ-PL-54 D-SHAPE LOCK (G2G)

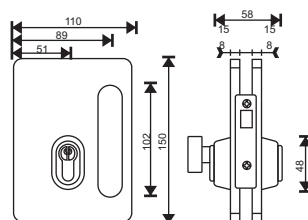


Specifications

The function instruction:

- Tapered edge. Brass lock cylinder with brass key.
- 300,00 times, mutual opening rate is eight-hundredth.
- With SS 304 cover of 1.5mm thickness
- For side-hung glass door of office building or top-gradr chamber.
- Direct installation without cutting hole. Ensures stability and firm.
- Door thickness 12mm

KZ-PL-55 SINGLE SIDE SLIDE LOCK (W2G)



Specifications

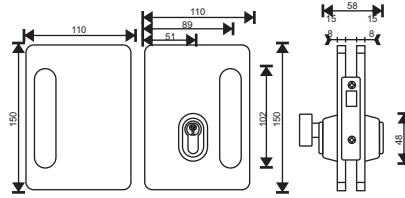
Single side slide door lock:

- With a euro profile cylinder and strike plate
- Bolt projection of 15mm (single throw)
- 3 high security computer key
- With SS 304 cover of 1.5mm thickness
- Ensures that the cover is secure in its place
- Finish: SS

GLASS DOOR LOCKS

KZ-PL-56

DOUBLE SIDE SLIDE LOCK (W2W)

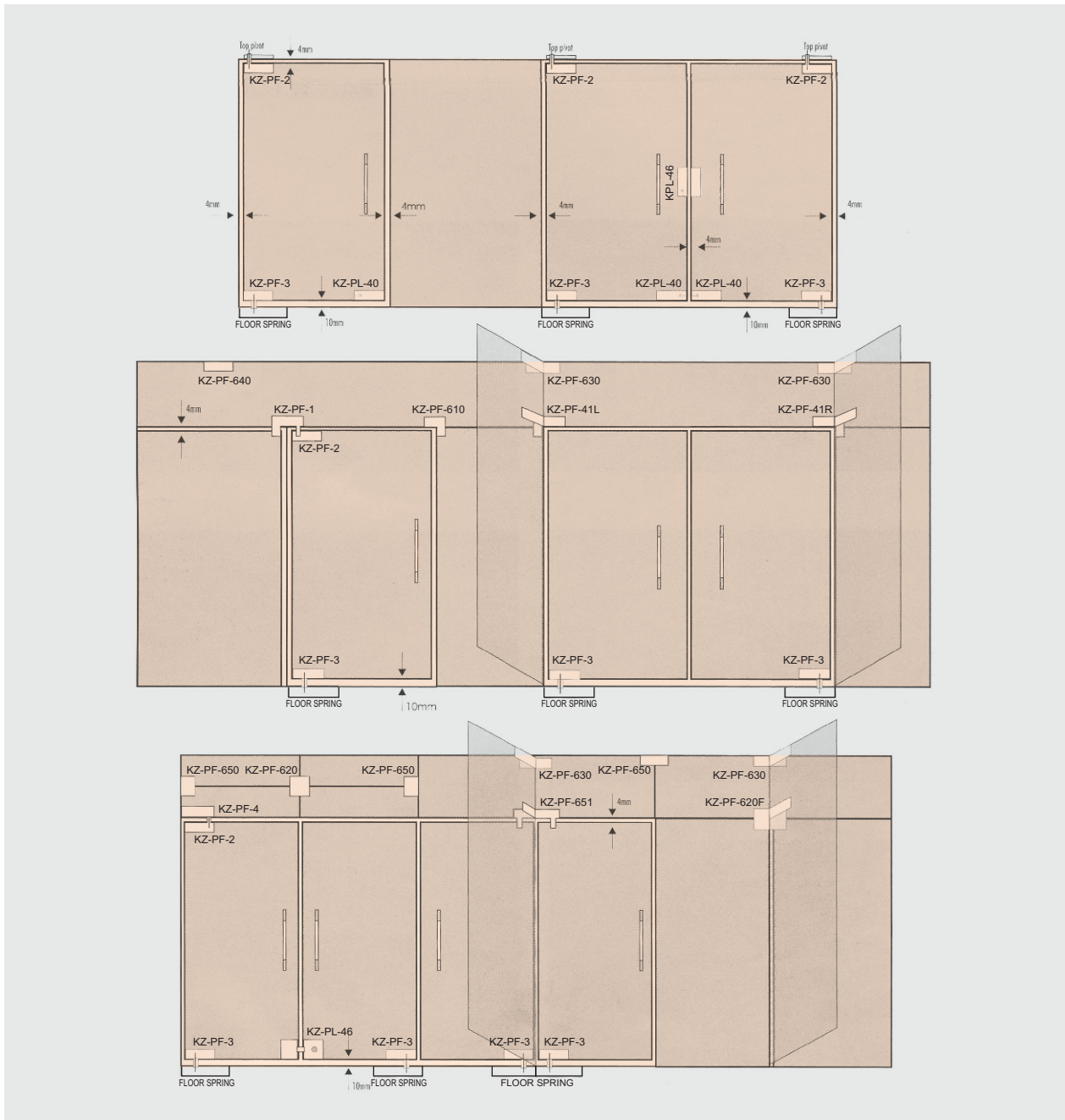


Specifications

Double side slide door lock:

- With a euro profile cylinder and strike plate
- Bolt projection of 15mm (single throw)
- 3 high security computer key
- With SS 304 cover of 1.5mm thickness
- Ensures that the cover is secure in its place
- Finish: SS

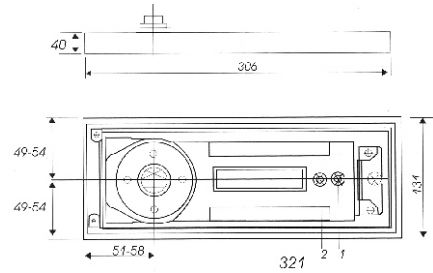
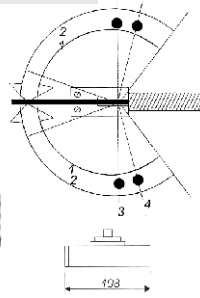
INSTALLATION CONCEPT



FLOOR SPRINGS

KFS-8400

Tested 5,00,000 cycles.



Technological Data	
• Closing force	25Nm
• The maximum width for door leaf	≤1200mm
• The maximum bearing weight	130kg
• Speed control	Two adjustable speed
• Location degree	90°

• Net weight	About 5.5kg
• Dimension	
Length	310mm
Width	111mm
Height	42mm
• The products have passed national QB/T2698-2005 standard	

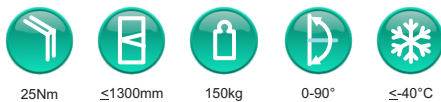
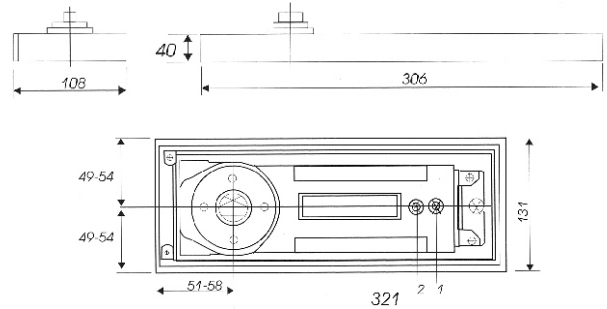
Closing Ranges: With the hold-open (optional extra).The door can be held at angles of either 90° or 105°

The Function Instruction

- Drive accessories use high quality steel, Italy oil seal useful life over 500,000 times.
- Inside pressure reducing value: using to prevent the destruction of the floor spring or oil leakage on occasions that the door is closed by strong pressure or wind force.
- General design, suitable for right hand to open the door in single and both sides.
- Use low temperature frostbite hydraulic oil, ensuring the normal door-closing speed when the temperature is forty degree or below zero degree.
- For cement container, 6mm adjustable in length, 5mm in width and 10mm in length, which is convenient for assembling.
- Super thin designed, enable it convenient to be installed with special demands.
- Available for all kinds of glass door and wooden door for public.

KFS-9400

Tested 5,00,000 cycles.



Technological Data	
• Closing force	35Nm
• The maximum width for door leaf	≤1300mm
• The maximum bearing weight	150kg
• Speed control	Two adjustable speed
• Location degree	90°

• Net weight	About 5.5kg
• Dimension	
Length	310mm
Width	111mm
Height	42mm
• The products have passed national QB/T2698-2005 standard	

Closing Ranges: With the hold-open (optional extra).The door can be held at angles of either 90° or 105°

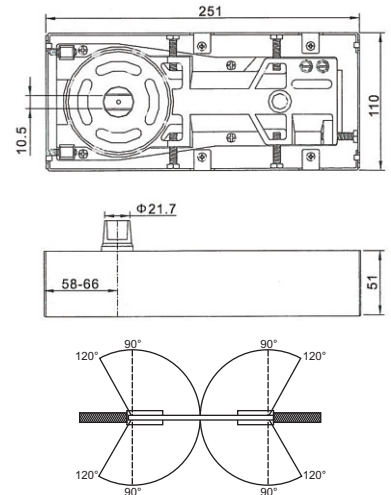
The Function Instruction

- Drive accessories use high quality steel, Italy oil seal useful life over 500,000 times.
- Inside pressure reducing value: using to prevent the destruction of the floor spring or oil leakage on occasions that the door is closed by strong pressure or wind force.
- General design, suitable for right hand to open the door in single and both sides.
- Use low temperature frostbite hydraulic oil, ensuring the normal door-closing speed when the temperature is forty degree or below zero degree.
- For cement container, 6mm adjustable in length, 5mm in width and 10mm in length, which is convenient for assembling.
- Super thin designed, enable it convenient to be installed with special demands.
- Available for all kinds of glass door and wooden door for public.

FLOOR SPRINGS

KFS-7400

Medium type, single cylinder
Tested 5,00,000 cycles.



Central axis, 90° two-way open type, the maximum dynamic positioning the opening Angle of 120°.



Technological Data	
Door weight	80kg
Dimension of appearance	251x110x51
Suitable for door size	900x2100mm

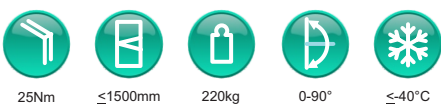
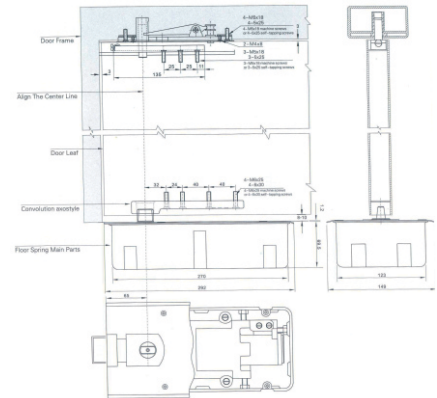
The Function Instruction

- Drive accessories use high quality steel, Italy oil seal useful life over 500,000 times.
- General design, suitable for opening doors with left/right hand to open the door in single side.
- Use low temperature frostbite hydraulic oil, ensuring the normal door-closing speed when the temperature is forty degree or below zero degree.
- For cement container, 6mm adjustable in length, 5mm in width and 10mm in length, which is convenient for assembling.
- Available for all kinds of glass door and wooden door for public.

Location degree	90°
Double action door	<input checked="" type="checkbox"/>
2 Section speed adjustment valve	<input checked="" type="checkbox"/>
The products have passed national QB/T2697-2005 standard	

KFS-10400

Extra heavy type, single cylinder
Tested 5,00,000 cycles.



Technological Data	
• Closing force	45Nm
• The maximum width for door leaf	≤1500mm
• The maximum bearing weight	220kg
• Speed control	Two adjustable speed
• Location degree	90°

The Function Instruction

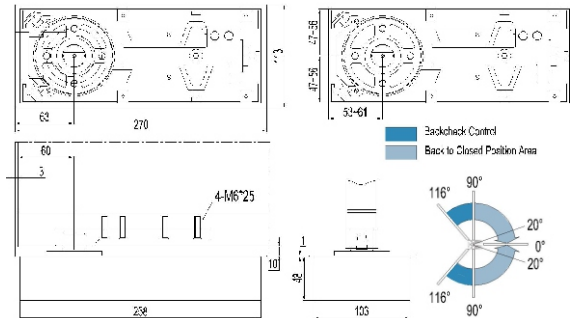
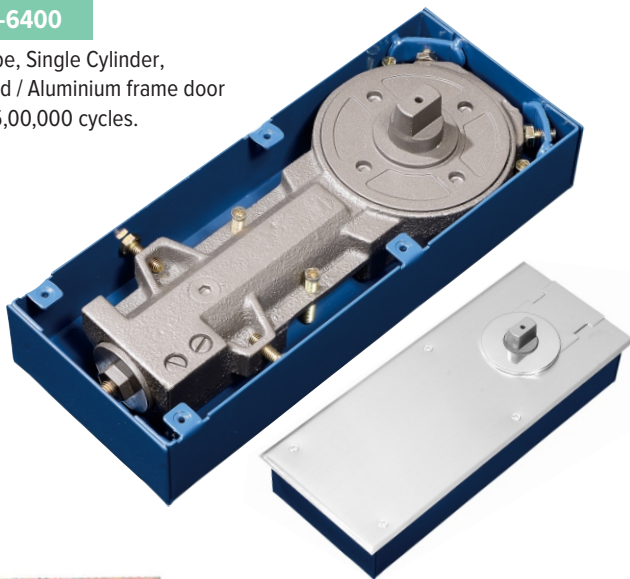
- Drive accessories use high quality steel, Italy oil seal useful life over 500,000 times.
- Inside pressure reducing value: using to prevent the destruction of the floor spring or oil leakage on occasions that the door is closed by strong pressure or wind force.
- General design, suitable for right hand to open the door in single and both sides.
- Use low temperature frostbite hydraulic oil, ensuring the normal door-closing speed when the temperature is forty degree or below zero degree.
- For cement container, 6mm adjustable in length, 5mm in width and 10mm in length, which is convenient for assembling.
- Super thin designed, enable it convenient to be installed with special demands.
- Available for all kinds of glass door and wooden door for public.

• Net weight	About 6.2kg
• Dimension	
Length	273mm
Width	126mm
Height	70mm
• The products have passed national QB/T2698-2005 standard	

FLOOR SPRINGS

KFS-6400

Light type, Single Cylinder,
For wood / Aluminium frame door
Tested 5,00,000 cycles.

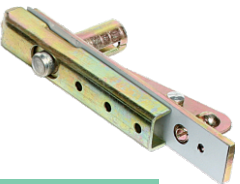


KZ-FSA-119

Bottom Strap



Adjustable Top Centers
Accessories for wooden /
Aluminium Door

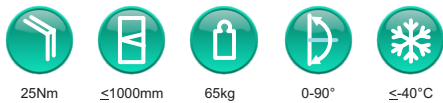


KZ-FSA-120

Pivot for Wooden & Aluminium Door

The Function Instruction

- Maximum door size of 900mmx2100mm, maximum weight carrying capacity 60kg.
- Built-in pressure relief valves protect the mechanism from abuse use, total mechanism is immersed in high quality hydraulic fluid ensuring smooth operation even under differing temperature conditions.
- Reversible for left hand doors, suitable for timber, aluminum doors.
- Latching range: 90° - 25° - 0°
- Maximum opening angle at 130° in either direction.
- With the hold-open option, the door can be held at 90°/105° (optional extra)
- Two independent closing speed adjustable values.



25Nm

≤1000mm

65kg

0-90°

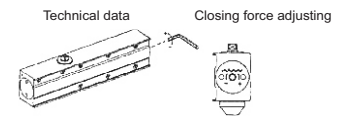
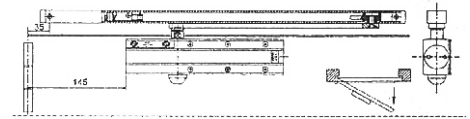
≤-40°C



DOOR CLOSER

KZ-PEARL

PELMET DOOR CLOSER
Finish : Silver, Antique



Closing force adjusting data				~(O)+
Adjusting circles	Door weight	Max. Door with	Max. Open angle	Remark
+0 - +5	40-60 kg	950mm	180°	
+5 - +10	60-80 kg	1050mm	180°	Factory state
+10 - +15	80-100 kg	1150mm	180°	



Technological Data

- Closing force 18-28Nm
- The maximum width for door leaf ≤1100mm
- The available bearing weight 70-80kg
- Speed control Two adjustable speed
- Location degree 180°

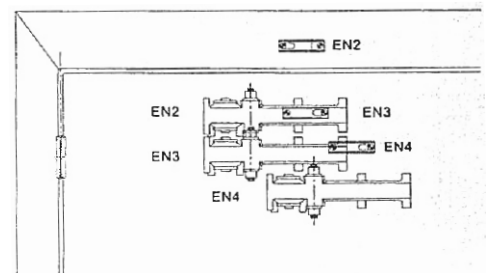
The Function Instruction

- Application to single door with the maximum door width of 1100mm.
- Precise sealed, preventing oil leakage, preventing oil leakage.
- High quality die-casting aluminium alloy, protected with two-layer bright plant.
- Two hydraulic press valves controlling two stage doors closing speed automatically, 180° fully hydraulic control.
- Two stage speed adjustment, 90-160° locating function is available.
- Either to be installed on door with normal or to be installed on door frame.
- Standard colour: golden, silver, copper or other kinds of colour on client's requirements.

- Orienting function Location or without is location optional
- Useful time > 500,000 times
- Net weight 3.5kg
- The products have passed national QB/T2698-2005 standard

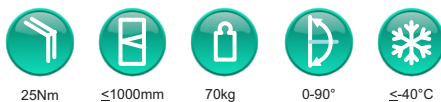
KZ-CAMRY

Concealed Door Closer



Power level of JU-092 can be adjusted through the regulation of rocking arm and position in order to meet different width of doors.

Door width	≤850	≤950	≤1100
Power level	EN2	EN3	EN4



Technological Data

- Closing force 14 Nm
- The maximum width for door leaf ≤1000mm
- The available bearing weight 60-70kg
- Speed control Two adjustable speed
- Location degree 180°

The Function Instruction

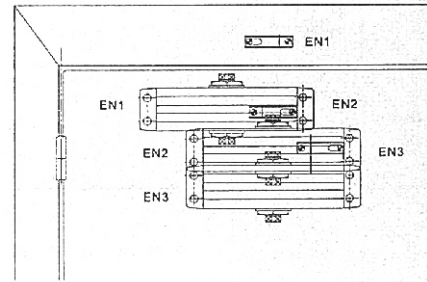
- Application to single door with the maximum door width of 1100mm.
- Precise sealed, preventing oil leakage, preventing oil leakage.
- High quality die-casting aluminium alloy, protected with two-layer bright plant.
- Two hydraulic press valves controlling two stage doors closing speed automatically, 180° fully hydraulic control.
- Two stage speed adjustment, 90-160° locating function is available.
- Either to be installed on door with normal or to be installed on door frame.
- Standard colour: golden, silver, copper or other kinds of colour on client's requirements.

- Orienting function Location or without is location optional
- Useful time > 500,000 times
- Net weight 1.9kg
- The products have passed national QB/T2698-2005 standard

DOOR CLOSER

KZ-MINI MAX

Exoteric Hydraulic Press Door Closer



Power level of JU-092 can be adjusted through the regulation of rocking arm and position in order to meet different width of doors.

Door width	≤800	≤900	≤1000
Power level	EN1	EN2	EN3



Technological Data

• Closing force	8Nm
• The maximum width for door leaf	≤ 800mm
• The available bearing weight	15-35kg
• Speed control	Two adjustable speed
• Location degree	360°

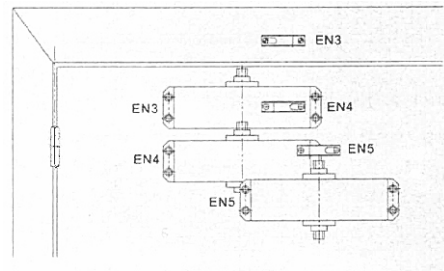
The Function Instruction

- Application to single door with the maximum door width of 900mm.
- Precise sealed, preventing oil leakage, trusefulltime is more then 500,000 times.
- High quality die-casting aluminium alloy, protected with two-layer bright plant.
- Two hydraulic press valves controlling two stage doors closing speed automatically, 180° fully hydraulic control.
- Two stage speed adjustment, maximum opening degree is 180, 90-160° locating function is available.
- Can be installed on right and left opening doors, with no need of refit.
- Standard colour: golden, silver, copper or other kinds of colour on client's requirements.

• Orienting function	Location or without is location optional
• Useful time	> 500,000 times
• Net weight	1.2kg
• Speed control	Two adjustable speed
• The products have passed national QB/T2698-2005 standard	

KZ-BRAVIA

Exoteric Hydraulic Press Door Closer



Power level of JU-092 can be adjusted through the regulation of rocking arm and position in order to meet different width of doors.

Door width	≤1000	≤1100	≤1200
Power level	EN3	EN4	EN5



Technological Data

• Closing force	18Nm
• The maximum width for door leaf	≤ 1100mm
• The available bearing weight	70-80kg
• Speed control	Two adjustable speed
• Location degree	180°

The Function Instruction

- Application to single door with the maximum door width of 1200mm.
- Precise sealed, preventing oil leakage, preventing oil leakage.
- High quality die-casting aluminium alloy, protected with two-layer bright plant.
- Two hydraulic press valves controlling two stage doors closing speed automatically, 180° fully hydraulic control.
- Two stage speed adjustment, 90-160° locating function is available.
- Either to be installed on door with normal or to be installed on door frame.
- Standard colour: golden, silver, copper or other kinds of colour on client's requirements.

• Orienting function	Location or without is location optional
• Useful time	> 500,000 times
• Net weight	1.6kg
• Speed control	Two adjustable speed
• The products have passed national QB/T2698-2005 standard	

DOOR CLOSER

KZ-CLASSIC

Exoteric Hydraulic Press Door Closer



25Nm



≤1000mm



50kg



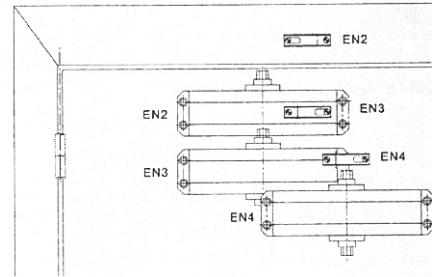
0-90°



≤40°C

Technological Data

- | | |
|-----------------------------------|----------------------|
| • Closing force | 14Nm |
| • The maximum width for door leaf | ≤1000mm |
| • The available bearing weight | 40-50kg |
| • Speed control | Two adjustable speed |
| • Location degree | 180° |



Power level of JU-092 can be adjusted through the regulation of rocking arm and position in order to meet different width of doors.

Door width	≤850	≤950	≤1100
Power level	EN2	EN3	EN4

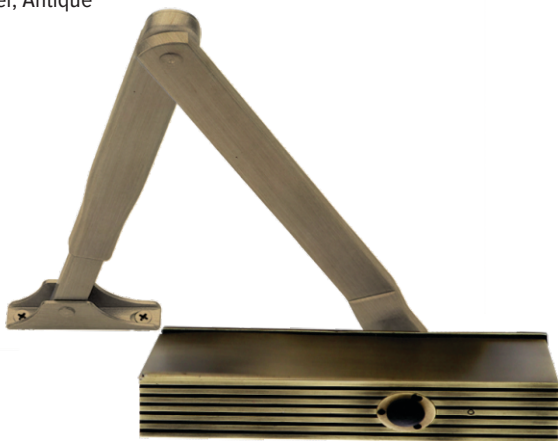
The Function Instruction

- Application to single door with the maximum door width of 1000mm.
- Precise sealed, preventing oil leakage, preventing oil leakage.
- High quality die-casting aluminium alloy, protected with two-layer bright plant.
- Two hydraulic press valves controlling two stage doors closing speed automatically, 180° fully hydraulic control.
- Two stage speed adjustment, 90-160° locating function is available.
- Either to be installed on door with normal or to be installed on door frame.
- Standard colour: golden, silver, copper or other kinds of colour on client's requirements.

• Orienting function	Location or without is location optional
• Useful time	> 500,000 times
• Net weight	1.6kg
• Speed control	Two adjustable speed
• The products have passed national QB/T2698-2005 standard	

KZ-HULK

Exoteric Hydraulic Press Door Closer
Finish : Silver, Antique



25Nm



≤1200mm



80kg



0-90°



≤40°C

Technological Data

- | | |
|-----------------------------------|----------------------|
| • Closing force | 14Nm |
| • The maximum width for door leaf | ≤1200mm |
| • The available bearing weight | 70-80kg |
| • Speed control | Two adjustable speed |
| • Location degree | 180° |

Power level of JU-092 can be adjusted through the regulation of rocking arm and position in order to meet different width of doors.

Door width	≤850	≤950	≤1100
Power level	EN2	EN3	EN4

The Function Instruction

- Application to single door with the maximum door width of 1000mm.
- Precise sealed, preventing oil leakage, preventing oil leakage.
- High quality die-casting aluminium alloy, protected with two-layer bright plant.
- Two hydraulic press valves controlling two stage doors closing speed automatically, 180° fully hydraulic control.
- Two stage speed adjustment, 90-160° locating function is available.
- Either to be installed on door with normal or to be installed on door frame.
- Standard colour: golden, silver, copper or other kinds of colour on client's requirements.

• Orienting function	Location or without is location optional
• Useful time	> 500,000 times
• Net weight	1.6kg
• Speed control	Two adjustable speed
• The products have passed national QB/T2698-2005 standard	

DOOR CLOSER

KZ-NEXUS

Exoteric Hydraulic Press Door Closer

Power level of JU-092 can be adjusted through the regulation of rocking arm and position in order to meet different width of doors.

Door width	≤800	≤900	≤1000
Power level	EN1	EN2	EN3



The Function Instruction

- Application to single door with the maximum door width of 900mm.
- Precise sealed, preventing oil leakage, trusefultime is more then 500,000 times.
- High quality die-casting aluminium alloy, protected with two-layer bright plant.
- Two hydraulic press valves controlling two stage doors closing speed automatically, 180° fully hydraulic control.
- Two stage speed adjustment, maximum opening degree is 180, 90-160° locating function is available.
- Can be installed on right and left opening doors, with no need of refit.
- Standard colour: golden, silver, copper or other kinds of colour on client's requirements.

Technological Data

• Closing force	8Nm
• The maximum width for door leaf	≤ 1100mm
• The available bearing weight	50-70kg
• Speed control	Two adjustable speed
• Location degree	360°
• Orienting function	Location or without is location optional
• Useful time	> 500,000 times
• Net weight	1.2kg
• Speed control	Two adjustable speed
• The products have passed national QB/T2698-2005 standard	



25Nm



≤1100mm



70kg



0-90°



≤-40°C

KZ-LITE

Exoteric Hydraulic Press Door Closer
(Single Speed Adjustment)

Power level of JU-092 can be adjusted through the regulation of rocking arm and position in order to meet different width of doors.

Door width	≤1000	≤1100	≤1200
Power level	EN3	EN4	EN5



The Function Instruction

- Application to single door with the maximum door width of 1200mm.
- Precise sealed, preventing oil leakage, preventing oil leakage.
- High quality die-casting aluminium alloy, protected with two-layer bright plant.
- Two hydraulic press valves controlling two stage doors closing speed automatically, 180° fully hydraulic control.
- Two stage speed adjustment, 90-160° locating function is available.
- Either to be installed on door with normal or to be installed on door frame.
- Standard colour: golden, silver, copper or other kinds of colour on client's requirements.

Technological Data

• Closing force	18Nm
• The maximum width for door leaf	≤ 900mm
• The available bearing weight	40-50kg
• Speed control	Single adjustable speed
• Location degree	180°
• Orienting function	Location or without is location optional
• Useful time	> 500,000 times
• Net weight	1.5kg
• The products have passed national QB/T2698-2005 standard	



25Nm



≤900mm



50kg

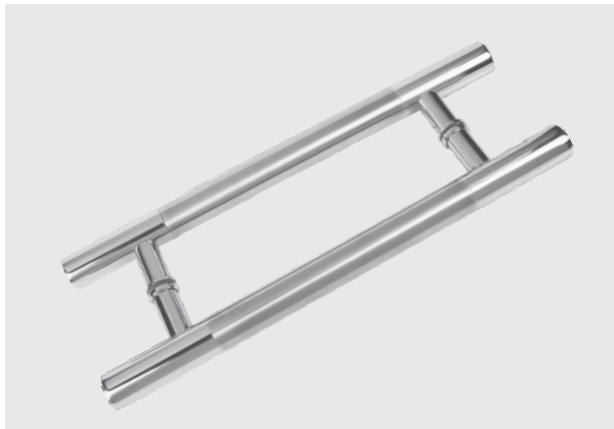


0-90°



≤-40°C

GLASS DOOR HANDLES

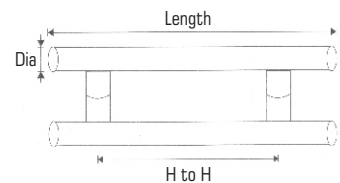


KDH 11

H-HANDLE

Specifications Glass Door Handle:

- Stainless Steel 304 grade
- Gaskets to prevent glass damage
- Grub screws kept out of sight
- Firm positioning
- For back to back installation
- Finish : SS



Available in Satin / Combination

22x200	22x250	22x300	32x450	32x600	32x900	32x1200	32x1500	Dia
150	200	200	300	450	600	900	1200	H to H
200	250	300	450	600	900	1200	1500	Length

KDH 22

D-HANDLE

Specifications Glass Door Handle:

- Stainless Steel 304 grade
- Gaskets to prevent glass damage
- Grub screws kept out of sight
- For back to back installation
- Finish : SS

Available in Satin / Combination

22x200	22x250	22x300	32x450	32x600	32x900	32x1200	32x1500	Dia
200	250	300	450	600	900	1200	1500	H to H
200	250	300	450	600	900	1200	1500	Length



GLASS DOOR HANDLES

KDH 44

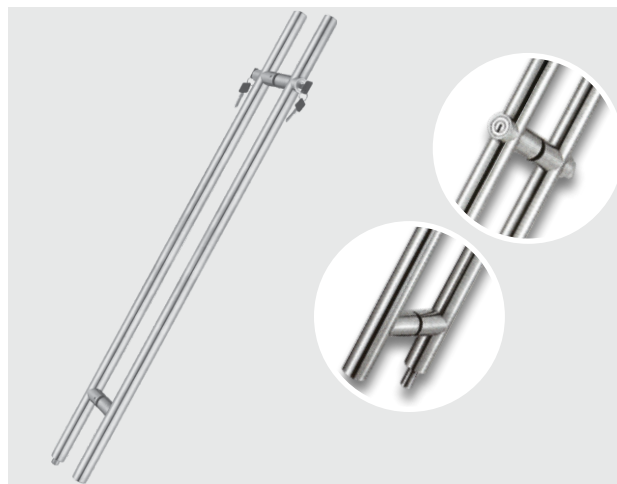
H-HANDLE (SQUARE SPRING)

Specifications Glass Door Handle:

- Stainless Steel 304 grade
- Gaskets to prevent glass damage
- Grub screws kept out of sight
- Firm positioning
- For back to back installation
- Finish : SS

Available in Satin / Combination

25x200	25x250	25x300	25x450	25x600	25x900	25x1200	Dia
200	250	300	450	600	900	1200	Length
150	200	200	300	400	600	900	H to H

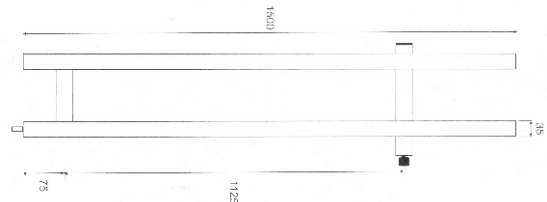


KDH 99

H-HANDLE WITH LOCK KEY

Specifications Glass Door Handle:

- Stainless Steel 304 grade
- Two point fixing with door
- Integral locking facility
- Key operated from the outside
- Thumb turn inside
- Supplied with high security keys
- Finish : SS

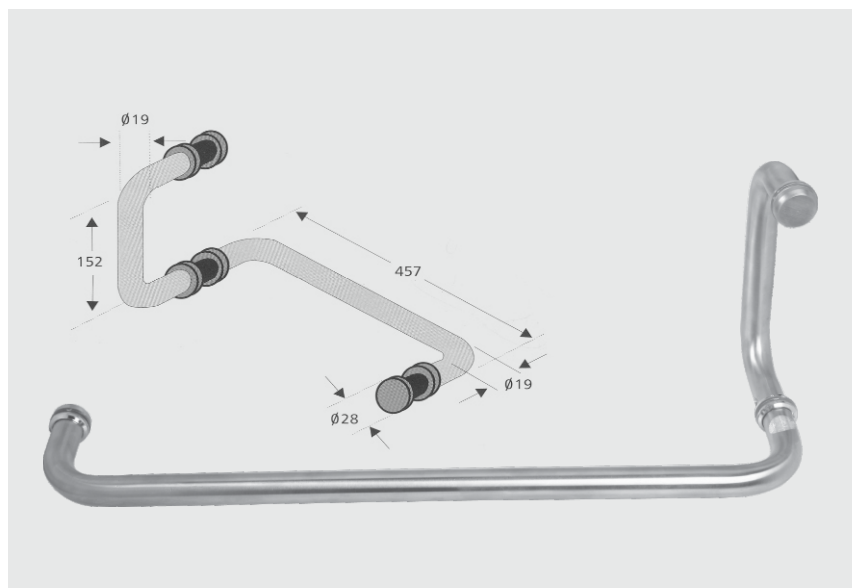


KTB 19mm, 25mm

TOWEL BAR CUM SHOWER HANDLE

Specifications Glass Door Handle:

- Stainless Steel 304 grade
- Three point fixing with door
- Integral locking facility
- Key operated from the outside
- Thumb turn inside
- Supplied with high security keys
- Finish : SS



GLASS CONNECTOR SERIES (SS)

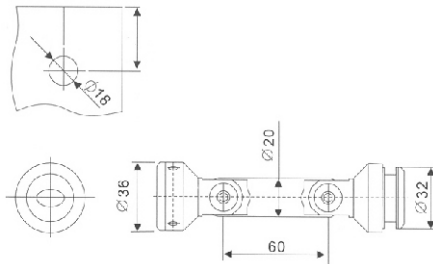


KZ-PGC-1

WALL TO GLASS CONNECTOR 90°

Holding Glass with Wall Specifications
Wall to Glass Connector 90° degrees

- Firm grip
- Adjustable within + 2.5mm
- No projection from glass
- Stainless Steel Grade 304

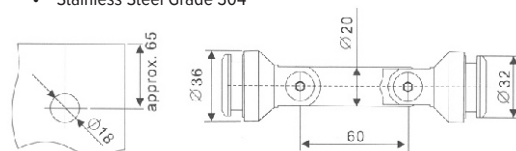


KZ-PGC-2

GLASS TO GLASS ADJUSTABLE

Glass to Glass Connector Specification

- Firm grip
- Adjustable within + 2.5mm
- No projection from glass
- Stainless Steel Grade 304

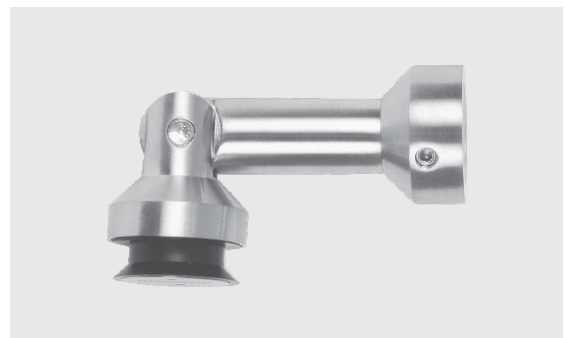
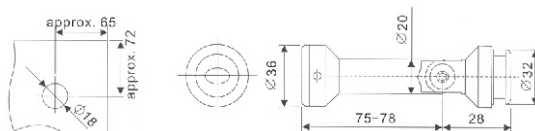


KZ-PGC-3

FLOOR/CEILING TO GLASS 90°

Floor/Ceiling to Glass Connector 90 degrees Specification

- Firm grip
- Adjustable within + 2.5mm
- No projection from glass
- Stainless Steel Grade 304

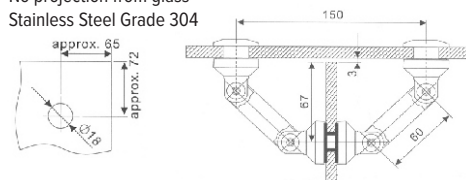


KZ-PGC-4

THROUGH GLASS CONNECTOR FOR 90° PARTITIONG

Through Glass Connector (for 90° partitioning) Specification

- Firm grip
- Adjustable within + 2.5mm
- No projection from glass
- Stainless Steel Grade 304



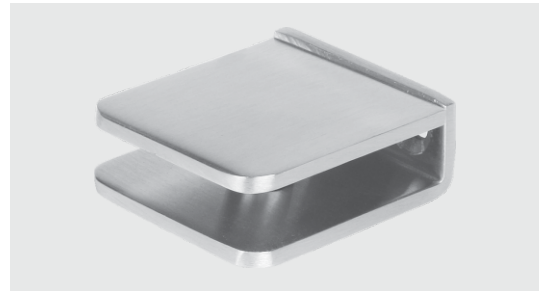
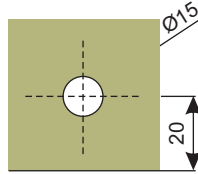
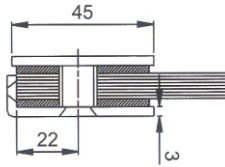
GLASS CONNECTOR SERIES (SS)

KZ-GC - 1

U CONNECTOR

Fixed for floor mounted Specifications

- Strengthening glass structure
- With gaskets to prevent glass damage
- Finish SS/CP
- SS Grade 304/316
- Thickness 3mm +

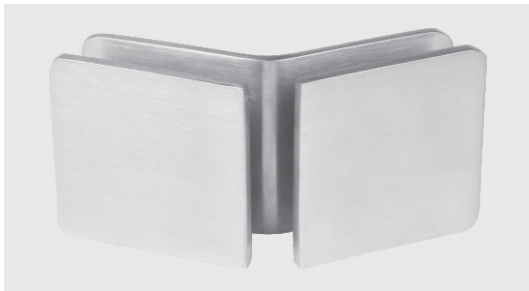
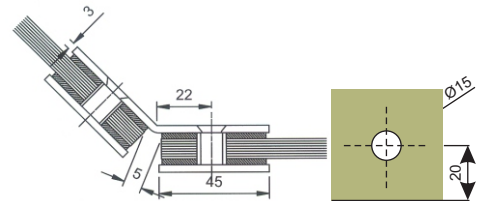


KZ-GC - 2

GLASS TO GLASS CONNECTOR 135°

Glass to Glass 135° Specifications

- Strengthening glass structure
- With gaskets to prevent glass damage
- Finish SS/CP
- SS Grade 304/316
- Thickness 3mm +

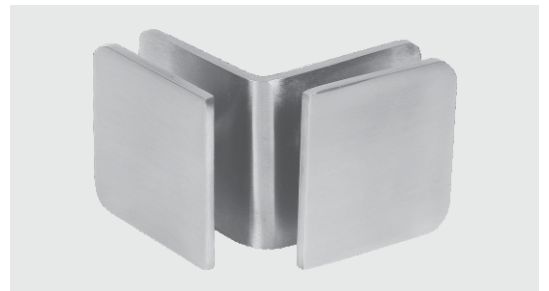
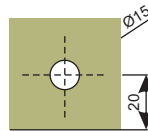
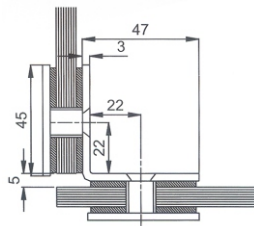


KZ-GC - 3

GLASS TO GLASS CONNECTOR 90°

Glass to Glass 90° Specifications

- Strengthening glass structure
- With gaskets to prevent glass damage
- Finish SS/CP
- SS Grade 304/316
- Thickness 3mm +

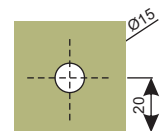
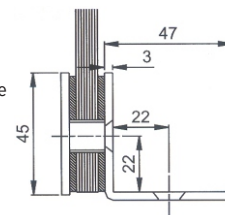


KZ-GC - 4

WALL TO GLASS 90°

Wall to Glass 90° Specifications

- Strengthening glass structure
- With gaskets to prevent glass damage
- Finish SS/CP
- SS Grade 304/316
- Thickness 3mm +

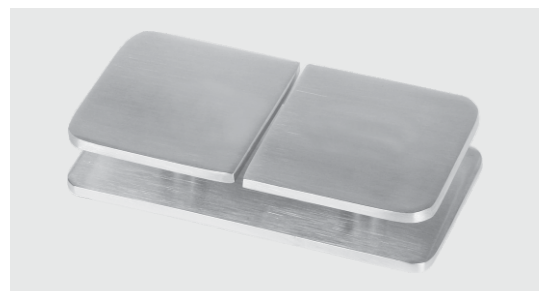
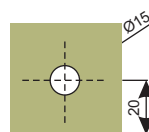
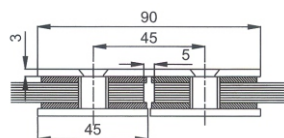


KZ-GC - 5

GLASS TO GLASS 180°

Glass to Glass 180° Specifications

- Strengthening glass structure
- With gaskets to prevent glass damage
- Finish SS/CP
- SS Grade 304/316
- Thickness 3mm +



GLASS SHOWER HINGES SERIES (ZINC)

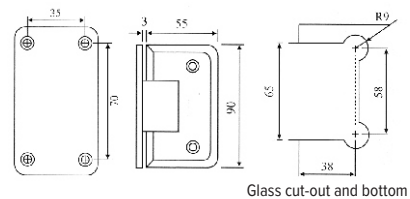


KZ-SH-ZN 1

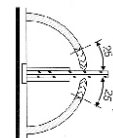
WALL TO GLASS 90°

Wall to Glass 90° Hinge Specifications

- Can be used for double action doors also
- With gaskets to prevent glass damage
- Door thickness can be from 6mm to 10mm
- Finish SS/CP
- Glass door hinge connected to wall
- Material Zinc Alloy



Glass cut-out and bottom



Double action spring return door from 25° in each direction

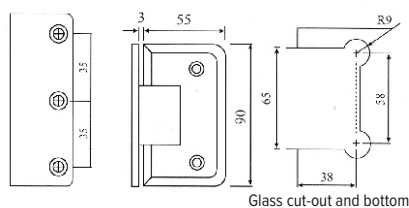


KZ-SH-ZN 1A

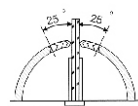
WALL TO GLASS 90° ONE SIDE

Wall to Glass 90° Hinge, One side

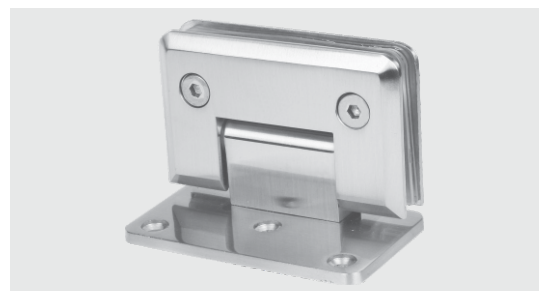
- With gaskets to prevent glass damage
- Door thickness can be from 6mm to 10mm
- Finish SS/CP



Glass cut-out and bottom



Double action spring return door from 25° in each direction



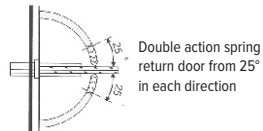
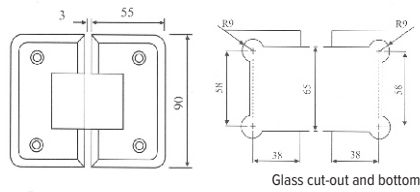
GLASS SHOWER HINGES SERIES (ZINC)

KZ-SH-ZN 2

GLASS TO GLASS 180°

Glass to Glass 180° Hinge

- Door Thickness 6mm to 10mm
- Door Weight 45 kgs maximum
- Finish : SS/CP

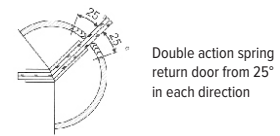
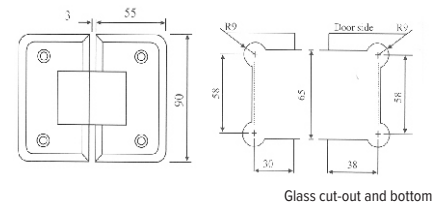


KZ-SH-ZN 3

GLASS TO GLASS 135°

Glass to Glass 135° Hinge

- Door Thickness 6mm to 10mm
- Door Weight 45 kgs maximum
- Finish : SS/CP

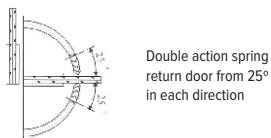
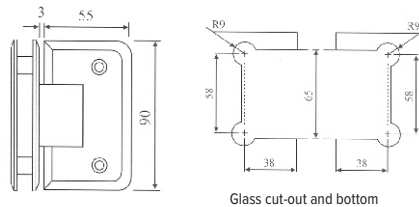


KZ-SH-ZN 4

GLASS TO GLASS 90°

Glass to Glass 90° Hinge

- Door Thickness 6mm to 10mm
- Door Weight 45 kgs maximum
- Finish SS/CP

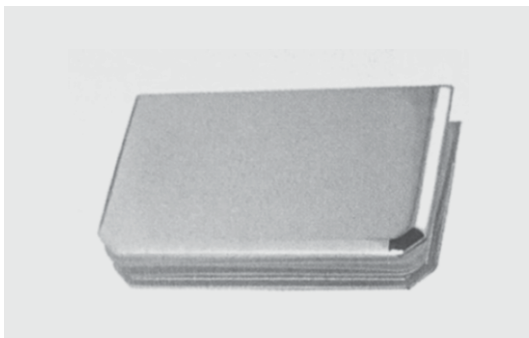
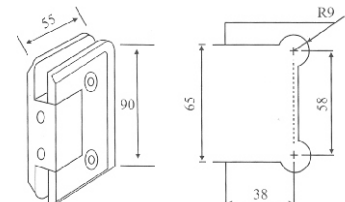


KZ-SH-ZN 5

FIXED 90°

Wall to Glass Fixed 90° Hinge

- Door Thickness 6mm to 10mm
- Door Weight 45 kgs maximum
- Finish SS/CP

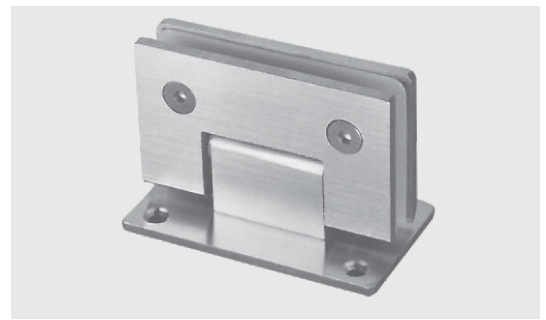
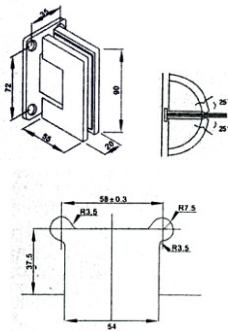


GLASS SHOWER HINGES SERIES (SS)

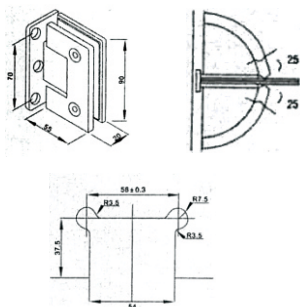


KZ-SH-SS 1 WALL TO WALL 90°

	Door thickness	8-12mm
	Available door width	800-1200mm
	Bearing weight	≤50kg
	Features	90° bathroom clamp, left and right open, the door will be closed automatically at less than 35°
	Material	Stainless Steel



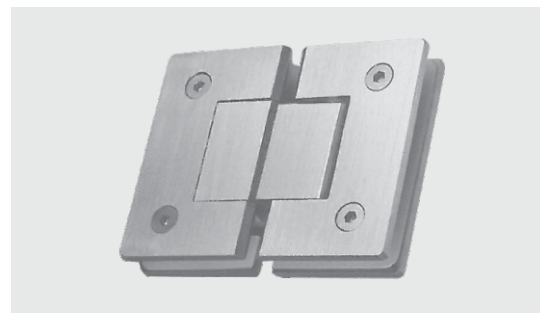
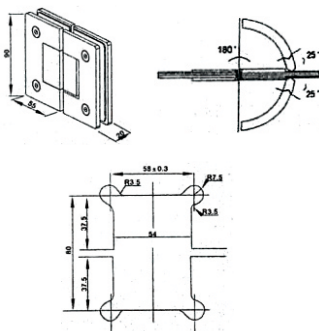
KZ-SH-SS 1A WALL TO WALL 90° ONE SIDE



	Door thickness	8-12mm
	Available door width	800-1200mm
	Bearing weight	≤50kg
	Features	90° bathroom clamp, left and right open, the door will be closed automatically at less than 35°
	Material	Stainless Steel

KZ-SH-SS 2 GLASS TO GLASS 180°

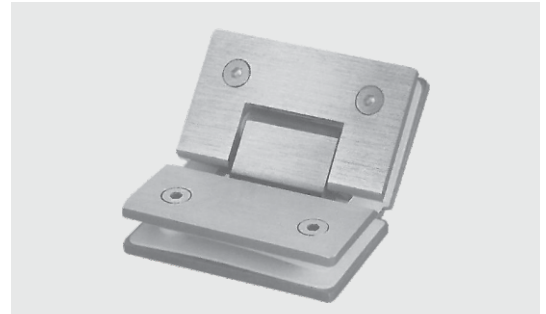
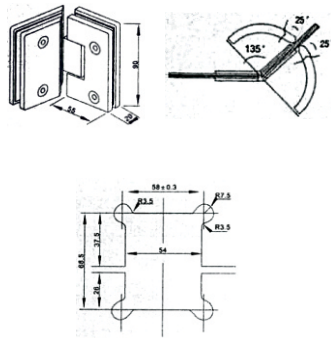
	Door thickness	8-12mm
	Available door width	800-1200mm
	Bearing weight	≤50kg
	Features	90° bathroom clamp, left and right open, the door will be closed automatically at less than 35°
	Material	Stainless Steel



GLASS SHOWER HINGES SERIES (SS)

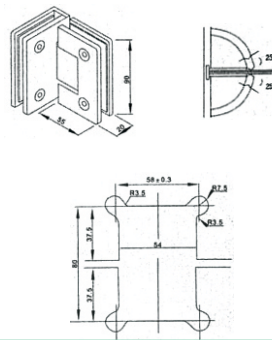
KZ-SH-SS 3 GLASS TO GLASS 135°

	Door thickness	8-12mm
	Available door width	800-1200mm
	Bearing weight	≤50kg
	Features	90° bathroom clamp, left and right open, the door will be closed automatically at less than 35°
	Material	Stainless Steel



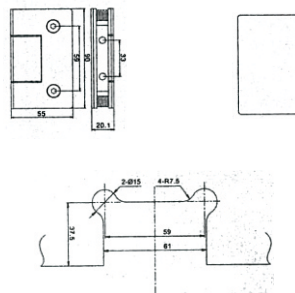
KZ-SH-SS 4 GLASS TO GLASS 90°

	Door thickness	8-12mm
	Available door width	800-1200mm
	Bearing weight	≤50kg
	Features	90° bathroom clamp, left and right open, the door will be closed automatically at less than 35°
	Material	Stainless Steel



KZ-SH-SS 1A FIXED - 90°

	Door thickness	8-12mm
	Available door width	800-1200mm
	Bearing weight	≤50kg
	Features	90° bathroom clamp, left and right open, the door will be closed automatically at less than 35°
	Material	Stainless Steel



NEW PRODUCT

KZ-SH-SS 6 GLASS TO GLASS TWO DOORS WITH ONE FIX

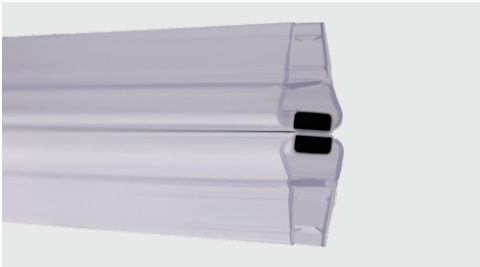


	Door thickness	8-12mm
	Available door width	800-1200mm
	Bearing weight	≤50kg
	Features	90° bathroom clamp, left and right open, the door will be closed automatically at less than 35°
	Material	Stainless Steel

PLASTIC PROFILE

KZ-MS-1

MAGNETIC SEAL 180°

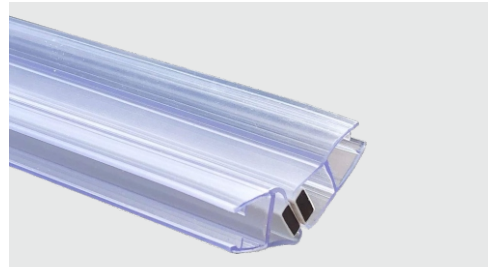


Specifications :

- Magnetic seal 180° for connection.
- Separate product for 8 and 10mm glass.
- Supplied in pairs

KZ-MS-2

MAGNETIC SEAL 135°



Specifications :

- Magnetic seal 180° for connection.
- Separate product for 8 and 10mm glass.
- Supplied in pairs

KZ-MS-3

MAGNETIC SEAL 90°

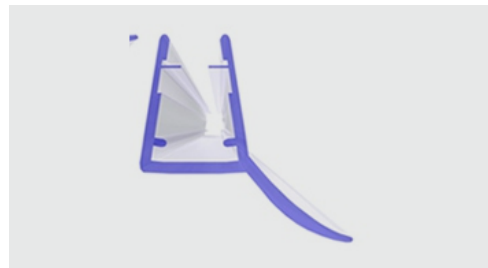


Specifications :

- Magnetic seal 180° for connection.
- Separate product for 8 and 10mm glass.
- Supplied in pairs

KZ-PS-1

WIPER SEAL



Specifications :

- Wall seal
- Transparent with soft lip
- Separate product for 8, 10 and 12 mm glass

KZ-PS-2

CENTRAL SEAL



Specifications :

- Central seal
- Transparent with soft lip. For sealing double action door and wall
- Separate product for 8, 10 and 12 mm glass

KZ-PS-3

SIDE SEAL



Specifications :

- Central 180° weather seal
- Used between fix panel & door panel
- Seal acts also as door stop
- Separate product for 8, 10 and 12 mm glass

KZ-PS-4

GAP SEAL



Specifications :

- Central 180° weather seal
- Separate product for 8, 10 and 12 mm glass

KZ-PS-5

F TYPE SEAL

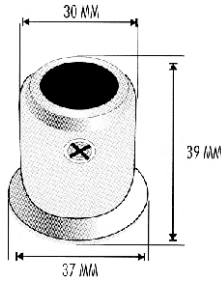


Specifications :

- Offset Lipseal
- Separate product for 8, 10 and 12 mm glass

KNIGHT HEAD ACCESSORIES

KZ-KH-1 REINFORCING BAR WITH WALL CONNECTOR



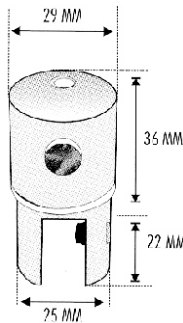
Specifications Reinforcing Bar Support :

- Stainless Steel grade 304
- Finish SN/CP
- To hold the pipe with wall for glass stabilization

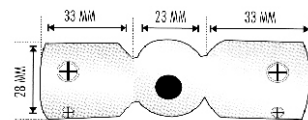
KZ-KH-2 REINFORCING BAR SUPPORT WITH THROUGH HOLE

Specifications; Reinforcing Bar Support :

- Through hole for the pipe
- Stainless Steel grade 304
- Finish SN/CP
- To support reinforcing pipe with glass for Glass Stabilization



KZ-KH-3 PIPE CONNECTOR



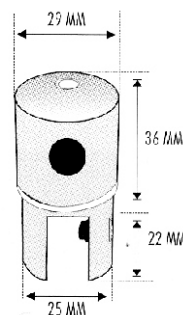
Specifications; Pipe Connector :

- Stainless Steel grade 304
- Finish SN/CP
- To join the pipe at any angle for Glass Stabilization

KZ-KH-4 REINFORCING BAR SUPPORT ONE SIDE

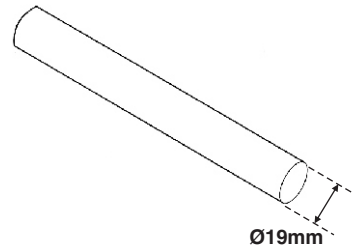
Specifications; Reinforcing Bar Support :

- Blind hole on one end
- Stainless Steel grade 304
- Finish SN/CP
- To hold the pipe with wall for glass stabilization



KNIGHT HEAD ACCESSORIES

KZ-KH-5 19 MM OUTER DIAMETER PIPE



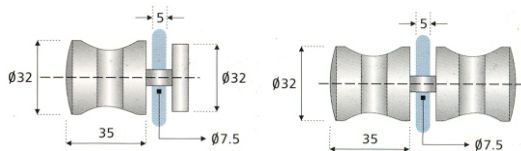
Specifications; Reinforcing Pipe :

- 19mm outer diameter pipe
- Stainless Steel grade 304
- Finish SN/CP
- To give stability to shower system

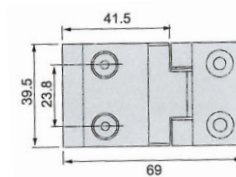
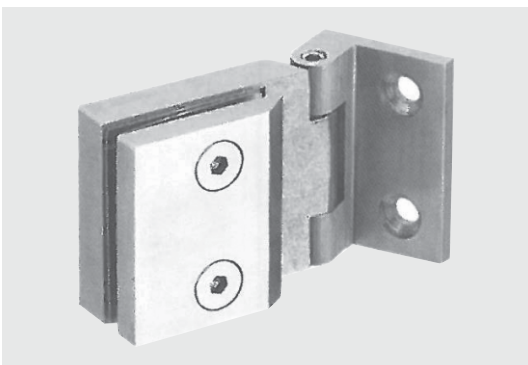
KZ-KH-6 DOOR KNOB

Specifications;

- Stainless Steel grade 304
- Finish SN/CP



KZ-PSH-30 HINGE FOR 5-8 MM GLASS (WALL TO GLASS)



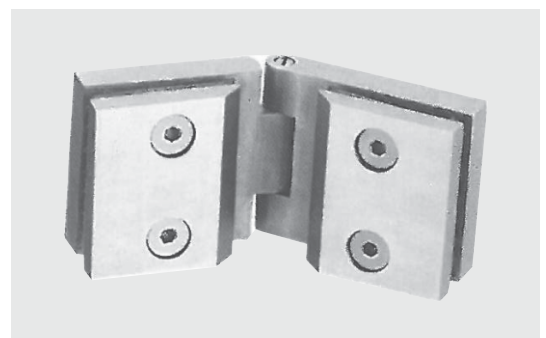
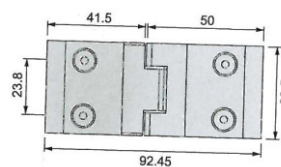
Specifications; Pipe Connector :

- Stainless Steel grade 304
- Finish SN/CP
- To join the pipe at any angle for Glass Stabilization

KZ-PSH-40 HINGE FOR 5-8 MM GLASS (WALL TO GLASS)

Specifications; Reinforcing Bar Support :

- Blind hole on one end
- Stainless Steel grade 304
- Finish SN/CP
- To hold the pipe with wall for glass



GLASS DOOR SLIDING SYSTEM

KZ-SD-1

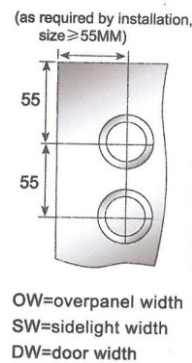
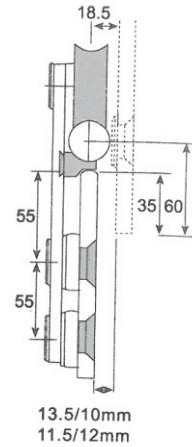
SLIDING DOOR ROLLER

The glass max. weight 100kg

Application To slide door

Specifications

- Independent needle bearings
- Eccentrically mounted rollers
- Bottom glass fixing point adjustable
- Countersunk head for better grip and look
- Smooth sliding action
- Stainless Steel 304



KZ-SD-1

FLOOR GUIDE

Application

To stabilize the door in movement

Specifications

- Length 50mm
- Suitable for 10mm or 12mm glass
- Stainless Steel grade 304

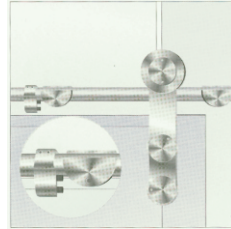


KZ-SD-6



GLASS DOOR SLIDING SYSTEM

KZ-SD-5 DOOR STOPPER



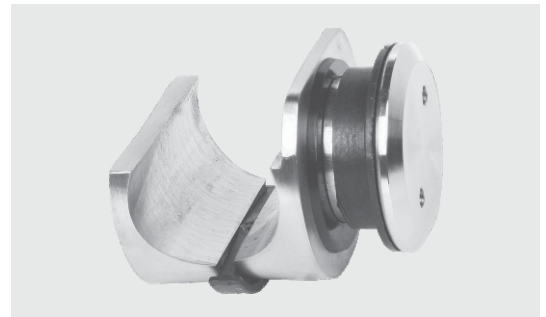
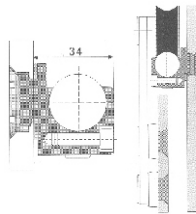
Application
To stop the door

- Specifications**
- Grub screws to prevent relative movement
 - Reversible for left hand and right hand side application
 - No need for separate stock
 - Length adjustable stopper
 - Stainless Steel grade 304

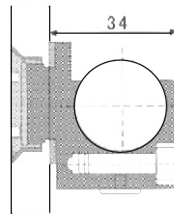
KZ-SD-9 CLAMP FIXING FOR TRACK

Application
To hold track with over panel or side panel

- Specifications**
Track to Glass Clamp :
- Length 50mm
 - Suitable for 10mm or 12mm glass
 - Stainless Steel grade 304



KZ-SD-10 CLAMP FIXING FOR TRACK (WALL MOUNTING)



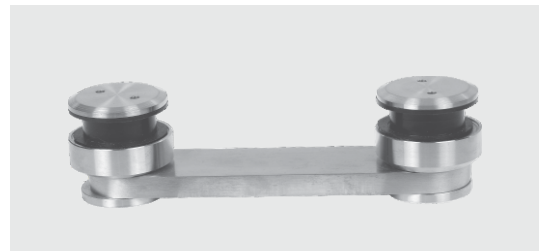
Application
To hold the Track with the Wall

- Specifications**
- Suitable for mounting on to masonry
 - Proper curvature ensures firm grip of the track
 - Clamp in two parts ensures proper tightness for the clamp
 - Stainless steel grade 304
 - Finish : SS

KZ-SD-08 25 MM SS ROD



KZ-SD-03 1800 FIXED FITTING



KZ-SD-04 END PIECE



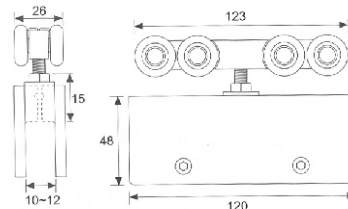
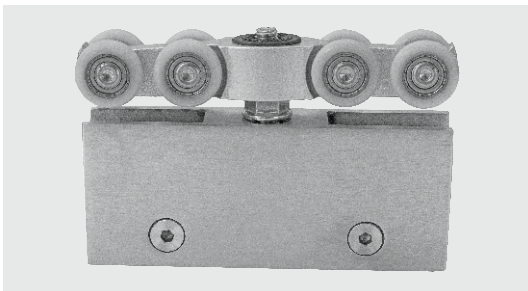
KZ-SD-02 SLIDING SLEEVE



GLASS DOOR WITH ALUMINIUM PROFILE SLIDING SYSTEMS



KZ-MG 54 A3 SQUARE SLIDING ROLLER (WITHOUT ROUND HANDLE & GUIDE)



Specifications

- Height adjustable glass holding point (10mm)
- Self aligning suspension of door
- Roller configuration for even distribution of load
- Suitable for 10 mm or 12 mm glass
- Weight of the bearing door: 80kg
- Stainless Steel 304

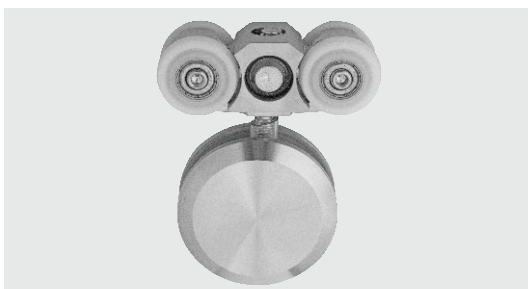
KZ-MG 54 A1 SMALL SLIDING ROLLER (WITHOUT ROUND HANDLE)

Specifications

- Height adjustable glass holding point (10mm)
- Self aligning suspension of door
- Roller configuration for even distribution of load
- Suitable for 10 mm or 12 mm glass
- Weight of the bearing door: 40kg
- Stainless Steel 304



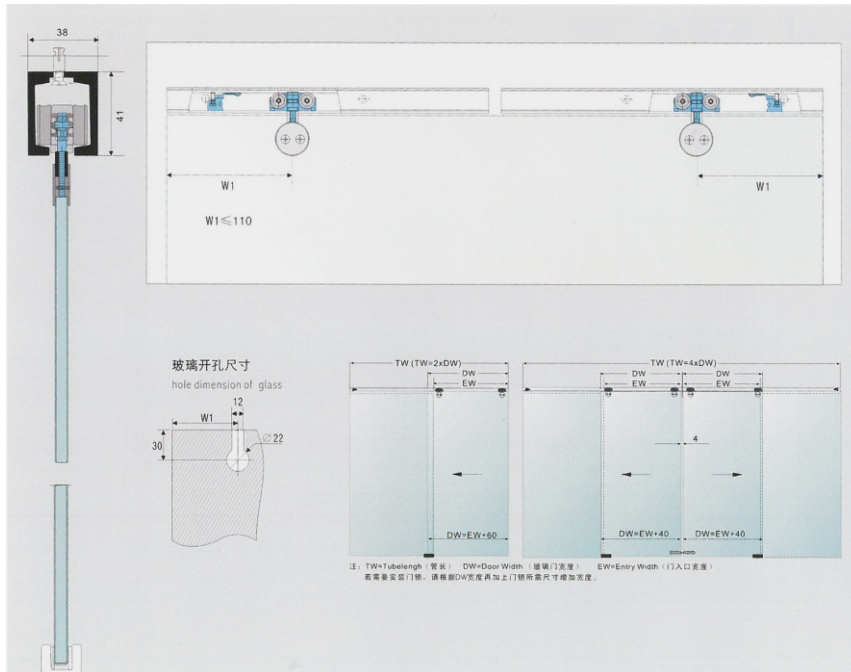
KZ-MG 54 A2 BIG SLIDING ROLLER (WITHOUT ROUND HANDLE)



Specifications

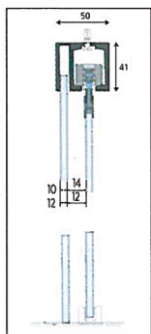
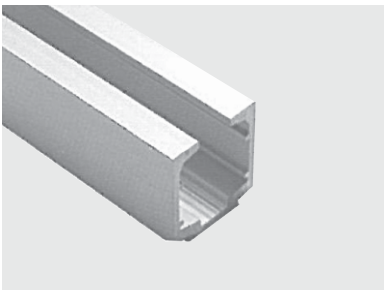
- Height adjustable glass holding point (10mm)
- Self aligning suspension of door
- Roller configuration for even distribution of load
- Suitable for 10 mm or 12 mm glass
- Weight of the bearing door: 40kg
- Stainless Steel 304

GLASS DOOR WITH ALUMINIUM PROFILE SLIDING SYSTEMS



KZ-MG 54 B1

GLASS DOOR SLIDING TRACK (3 MTR.)

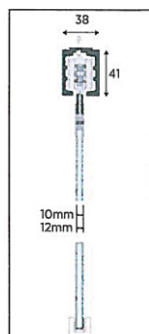
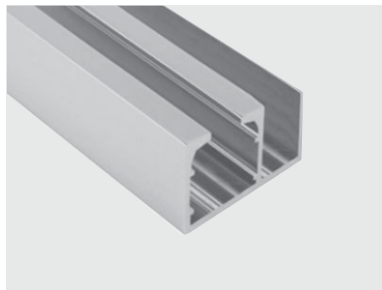


Specifications For Single Door

- Aluminium anodized Track
- Robust in construction
- Available in 2mtr. & 4mtr. length
- Wall/Ceiling/Glass mountable
- Small size for better look
- Finish: SS / AN

KZ-MG 54 B2

GLASS DOOR SLIDING TRACK (4 MTR.)

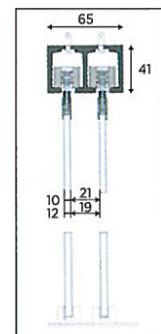
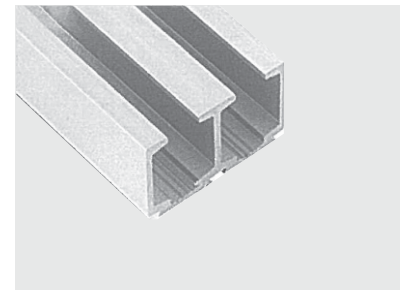


Specifications For Single Door

- Aluminium anodized Track
- Robust in construction
- Available in 2mtr. & 4mtr. length
- Wall/Ceiling/Glass mountable
- Small size for better look
- Finish: SS / AN

KZ-MG 54 A2

GLASS DOOR SLIDING TRACK (4 MTR.)

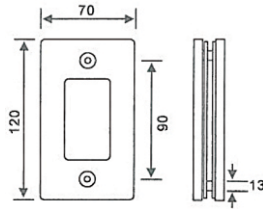


Specifications For Single Door

- Aluminium anodized Track
- Robust in construction
- Available in 2mtr. & 4mtr. length
- Wall/Ceiling/Glass mountable
- Small size for better look
- Finish: SS / AN

GLASS DOOR WITH ALUMINIUM PROFILE SLIDING SYSTEMS

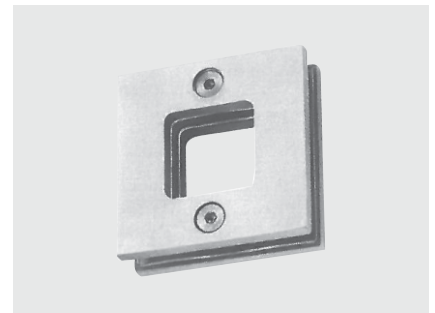
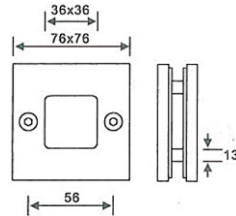
KZ-DH-101 GLASS DOOR SLIDING KNOB



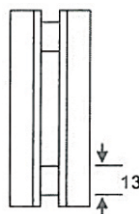
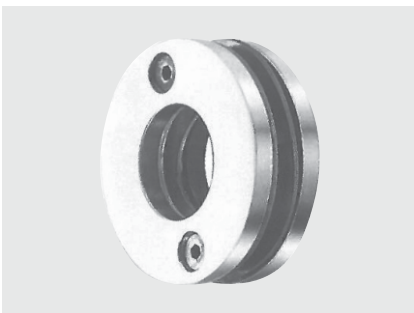
	Door thickness	10-12mm
	Available for	Tempered glass
	Material	Stainless Steel, Cuprum

KZ-DH-102 GLASS DOOR SLIDING KNOB

	Door thickness	10-12mm
	Available for	Tempered glass
	Material	Stainless Steel, Cuprum



KZ-DH-103 GLASS DOOR SLIDING KNOB



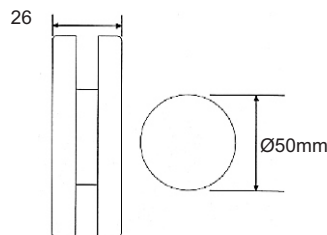
	Door thickness	10-12mm
	Available for	Tempered glass
	Material	Stainless Steel, Cuprum

KZ-DH-104 SLIDING ROUND HANDLE (50MM)

Application
To move the door

Specifications

- Glass preparation of 50mm diameter hole
- Stainless steel grade 304
- Finish : SS



BATHROOM SLIDING SYSTEM (SINGLE DOOR)

K001 STANDARD APPLICATION FOR SINGLE DOOR (COMPLETE SET)

KZ-001



K001-1-2



K001-2-2



K001-3-2



K001-4-2



K001-5-2



K001-6-1



K001-7-1



K001-8-1 30x10

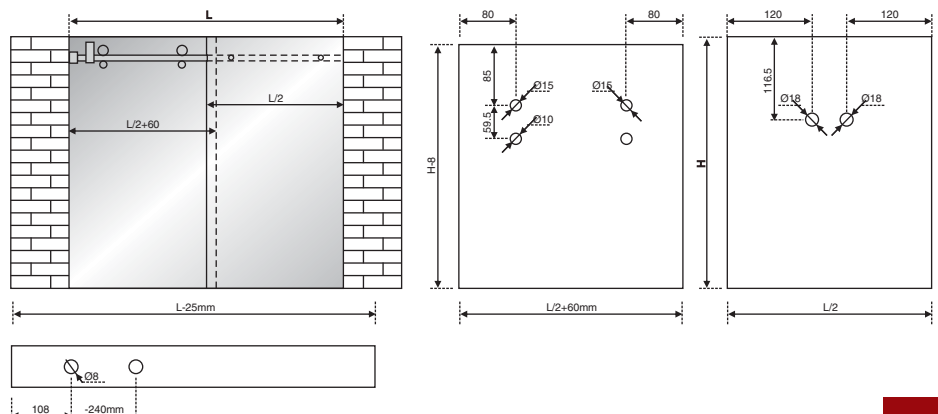


Nonstandard shower room installation diagram

Instructions:

- 1) Maximum weight wearing of the shower room: 65kg
- 2) 180° maximum installation length is 1.8m; 90° dual-open door maximum installation length is 1.0m
- 3) There are no drilled holes in the guide rails ordered by users, Holes shall be made during installation
- 4) The accessories are only suitable for clamping 8mm-10mm glass
- 5) When drilling holes in glass, please do strictly in accordance with dimensions in the installation diagram
- 6) Every type can install 90° dual-open, 90° single-open and 180°

30x10 Installation of Square Pipe with Jumping-proof Pillar



BATHROOM SLIDING SYSTEM (DOUBLE DOOR)

K002 STANDARD APPLICATION FOR DOUBLE DOOR (COMPLETE SET)

KZ-002



K002-1-4



K002-2-4



K002-3-1



K002-4-2



K002-5-4



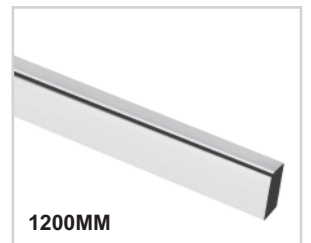
K002-6-2



K002-7-2



K002-6-2 30x10



1200MM

K002-9-2 Ø8



1000MM

GLASS DOOR SLIDING FOLDING SYSTEM



Frameless Glass Sliding Folding System-1700

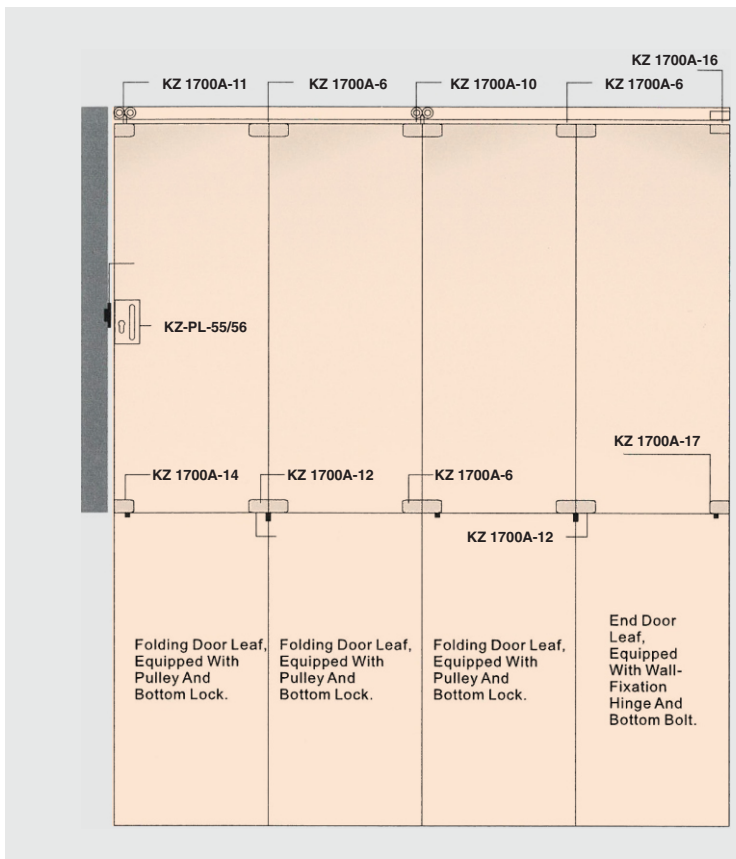
Sliding Folding Door System can be a very attractive and practical use of space, helping to create a contemporary design in your home and offices. The system enables making a glass wall which can be slided and folded to one side when required, enabling 100% walkable opening of the doorways.



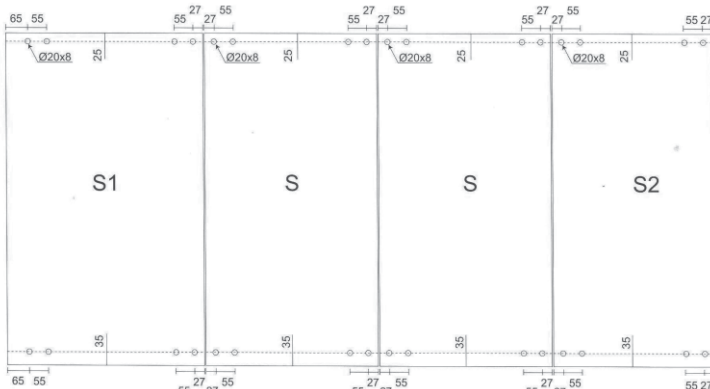
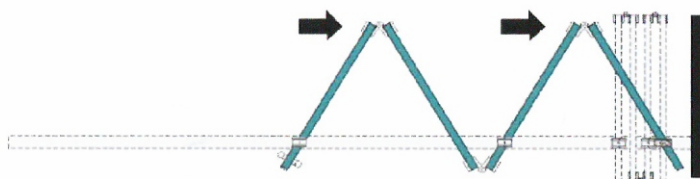
GLASS DOOR SLIDING FOLDING SYSTEM

Structural Components for Movable Glass Partition System

KZ 1700A



Max. Door Leaf Height	2500mm	2500mm	2500mm	2500mm
Max. Door Leaf Width	900mm	900mm	900mm	900mm
Max. Door Leaf Load	70kg	70kg	70kg	70kg



KZ-1700-A-16



KZ-1700-A-6



KZ-1700-A-10



KZ-1700-A-11



KZ-1700-A-17



KZ-1700-A-12



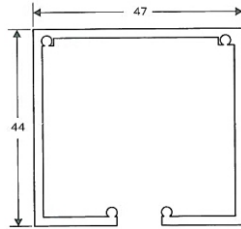
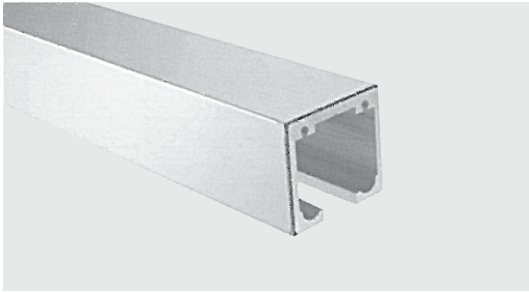
KZ-1700-A-14



GLASS DOOR SLIDING FOLDING SYSTEM

KZ-1700-C-1

Frameless Sliding Folding System - 444



Specifications

Top Track for Sliding Folding Doors

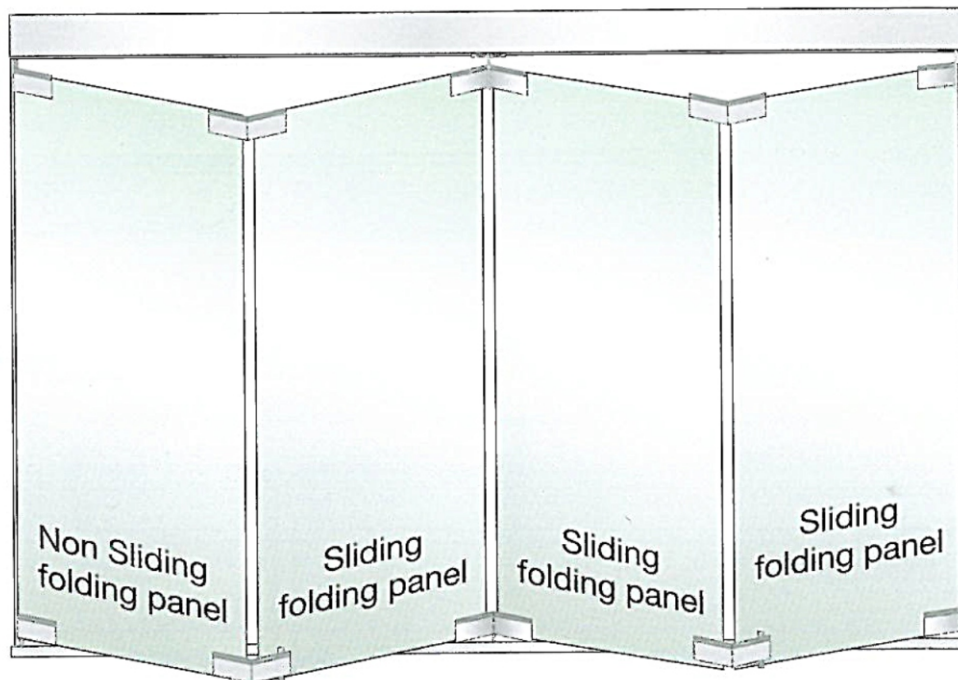
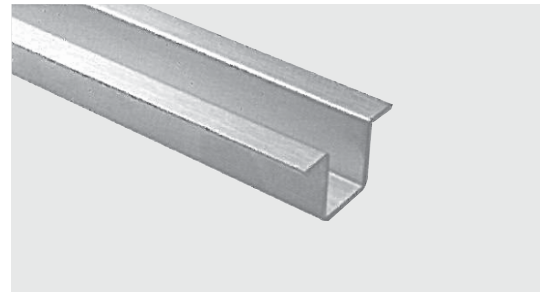
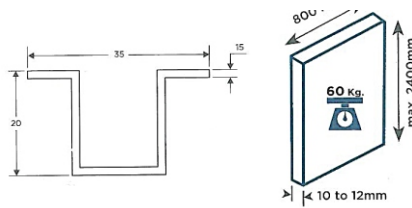
- Top track for sliding folding door system
- Mounted to the ceiling
- Total height 44mm
- Total width 47mm
- Perfect curvature to accommodate rollers
- Aluminium alloy track
- Sturdy and rigid design for smooth working of the system
- Available in 3mtr. & 4mtr. length

KZ-1700-A-15

Specifications

Bottom Track For Sliding Folding Doors

- Bottom track for the sliding folding system
- Perfect depth and width to allow sliding
- To be installed in the floor
- Stainless Steel Grade 304
- Available in 3mtr. & 4mtr. length



For Panel Sliding Folding System

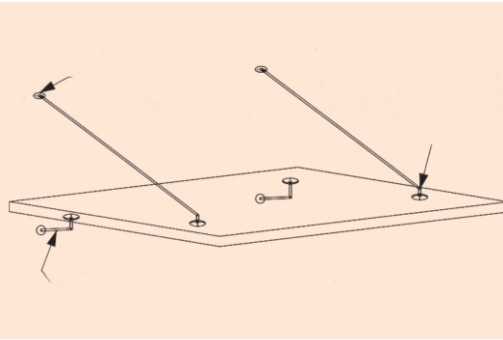
Features

- Sliding folding system using interlinked frameless glass panels for wide opening
- Panel locking facility to floor
- Ceiling mounted track which accommodates rollers
- Highly stable
- Smooth movement

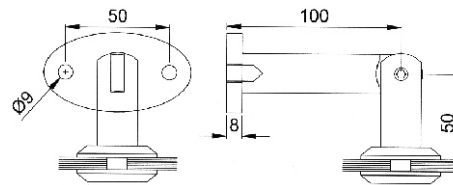
Technical Specification

Total height of the system	2400mm
Number of panels	2, 3 & 4
Maximum panels weight	60 kg
Maximum panels width	800mm
Glass thickness options	10mm or 12mm

CANNOPY FITTINGS



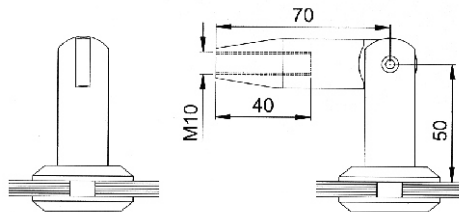
KZ-CF-1 WALL TO GLASS



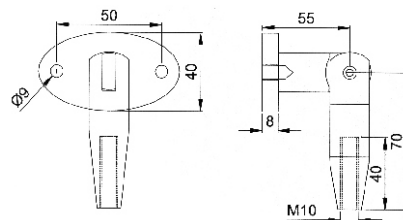
- Specifications**
Articulated Routil:
- Flat head bolt
 - Teflon washers to prevent damage to glass
 - Stainless Steel grade 316
 - To use along with spider

KZ-CF-2 GLASS TO ROD

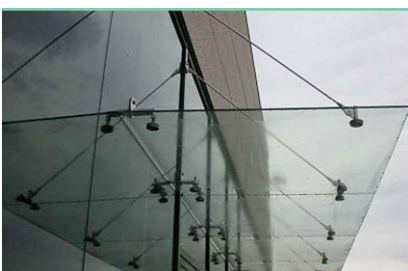
- Specifications**
Articulated Routil:
- Flat head bolt
 - Teflon washers to prevent damage to glass
 - Stainless Steel grade 316
 - To use along with spider



KZ-CF-3 WALL TO ROD



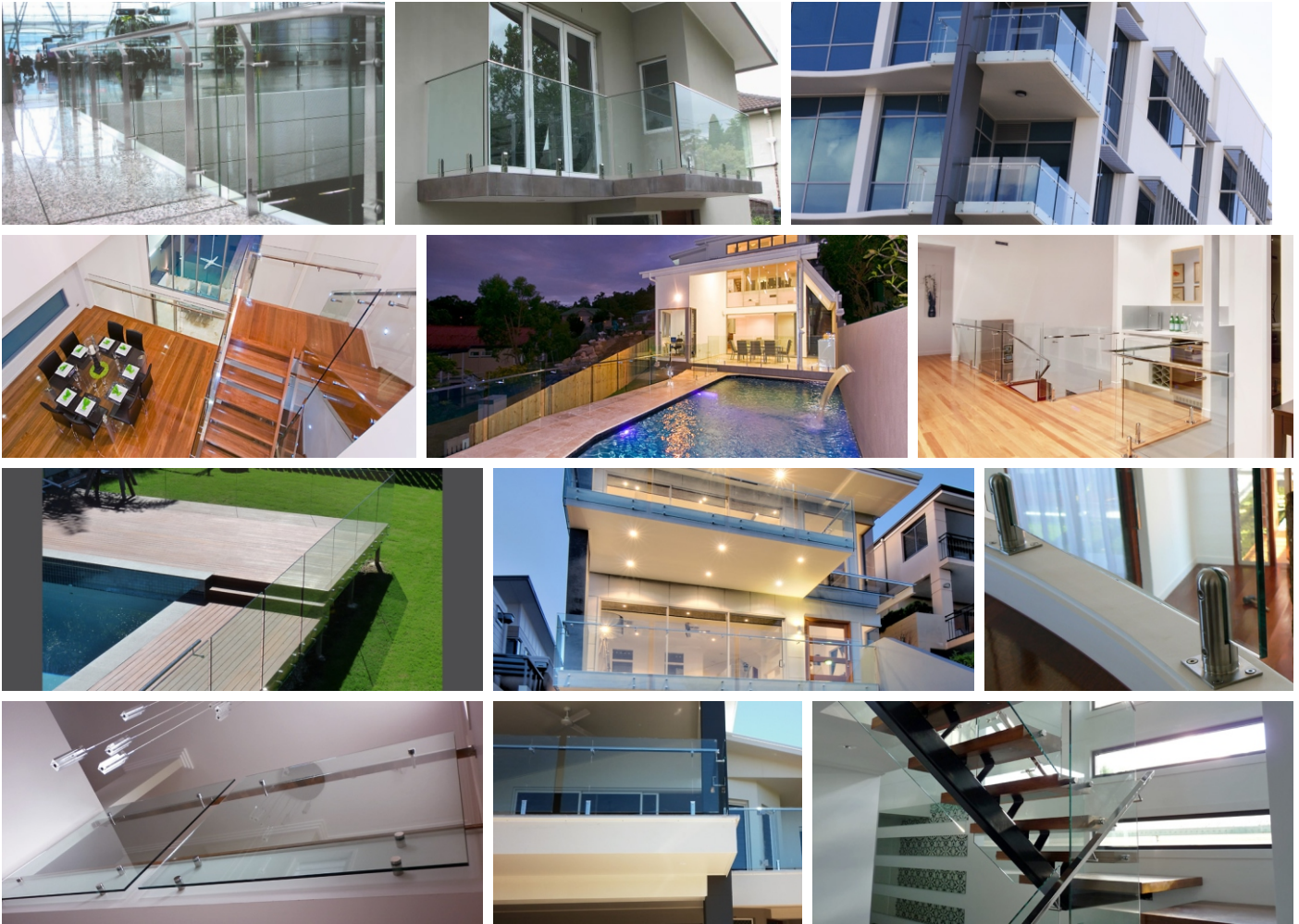
- Specifications**
Articulated Routil:
- Flat head bolt
 - Teflon washers to prevent damage to glass
 - Stainless Steel grade 316
 - To use along with spider



KZ-CF-ROD CANOPY ROD 12MM (1.5/2 MTR.)



RAILING BALUSTRADES - Stainless Steel (304)



MATERIAL : SS 304/316



**Designs as per
Architects / Customers
can also be
produced on request**



KZ-B-600



KZ-B-602



KZ-B-605



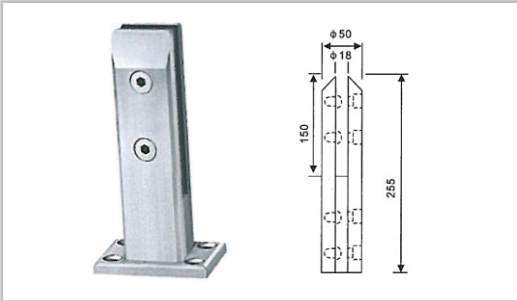
KZ-B-606



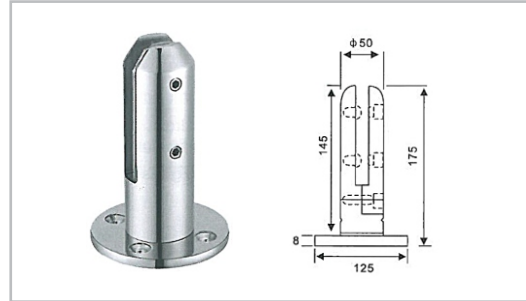
KZ-B-608

RAILING BALUSTRADES - Stainless Steel (304)

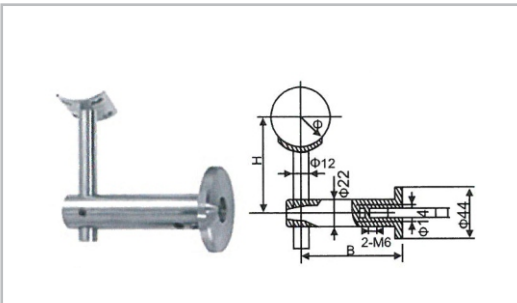
KZ-B-620 Sizes : 6", 8", 10"



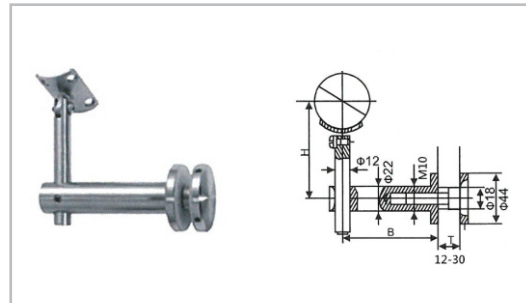
KZ-B-624 Sizes : 10"



KZ-R-1001



KZ-R-1002



KZ-R-1003



KZ-R-1004



SPIDER FITTING WITH FIN (SS 316)

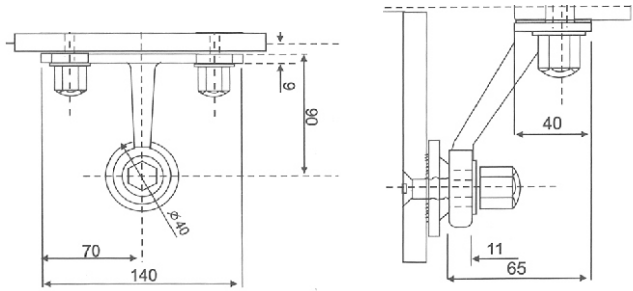


KZ-SFF-201

Specifications

One Way Spider :

- Installed with articulated routels
- Firm holding with wall
- To hold one glass with wall

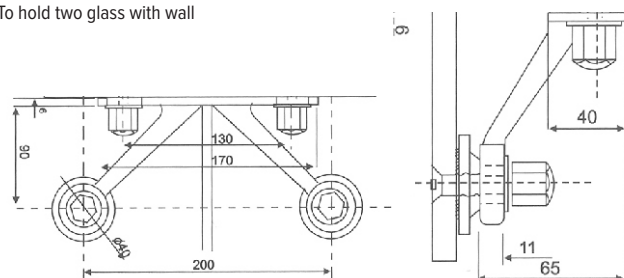


KZ-SFF-202

Specifications

Two Way Spider :

- Installed with articulated routels
- Firm holding with wall
- To hold two glass with wall

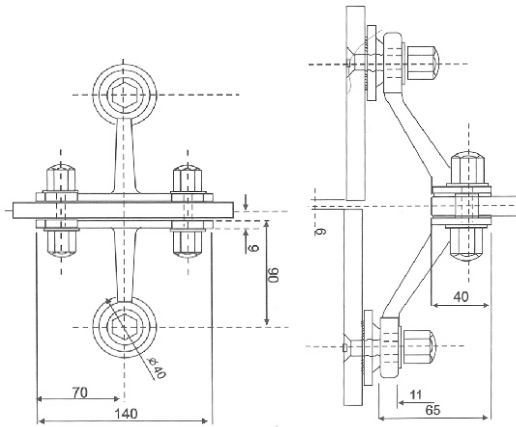


SPIDER FITTING WITH FIN

KZ-SFF-202 A

2 Way Spider Fitting for Flush Glazing to Suit 2 Glass Panel Assembly with Fin
Material:
Stainless Steel Grade 316

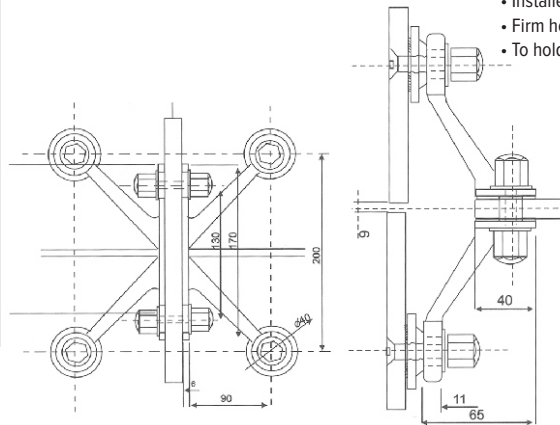
- Specifications Four Way Spider :**
- Installed with articulated routels
 - Firm holding with fin
 - To hold two glasses with fin



KZ-SFF-204

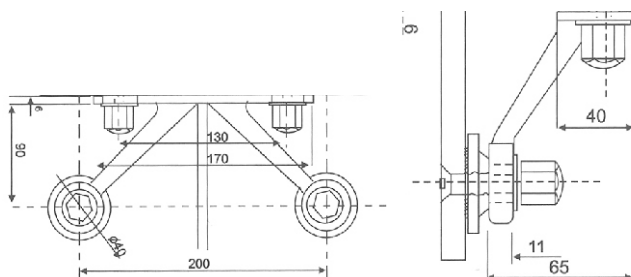
4 Way Spider Fitting for Flush Glazing to Suit 2 or 4 Glass Panel Assembly with Fin
Material Stainless Steel Grade 316

- Specifications**
Four Way Spider :
- Installed with articulated routels
 - Firm holding with fin
 - To hold four glasses with fin



KZ-SFF-205

- Specifications**
Two Way Spider :
- Installed with articulated routels
 - Firm holding with wall
 - To hold two glass with wall

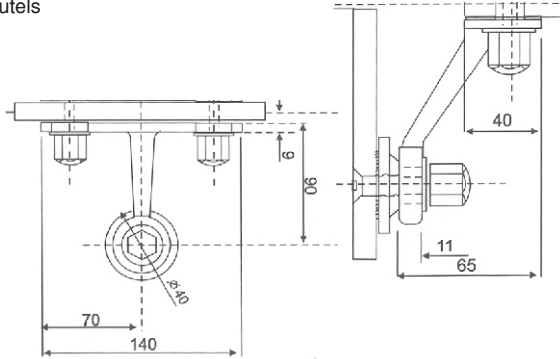


KZ-SFF-206

Specifications

One Way Spider :

- Installed with articulated routels
- Firm holding with wall
- To hold one glass with wall

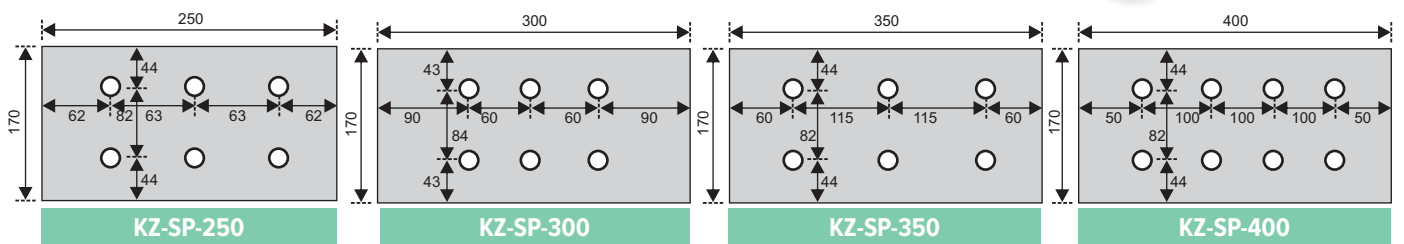
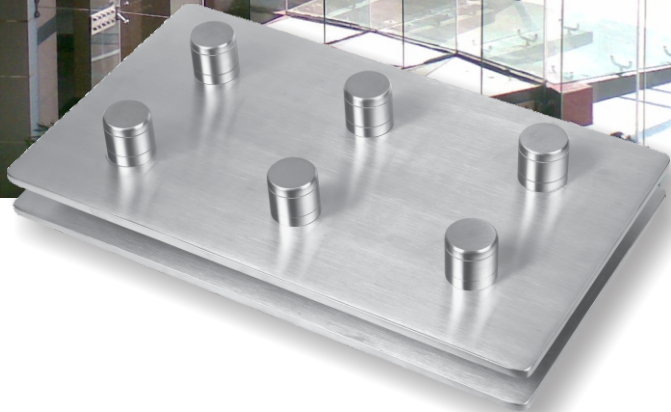


SPLICE PLATES



Specifications Splice Plate :

- Elongated holes allows installation flexibility
- Teflon washers to prevent damage to glass
- To hold two Pieces of fin together
- Stainless Steel 304 grade



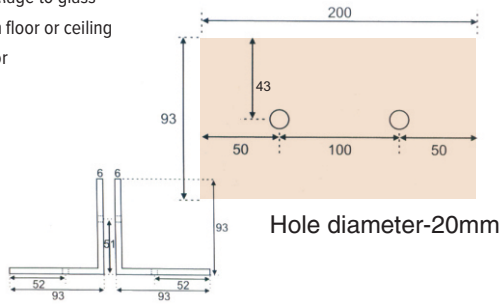
FIN PLATES

KZ-FP-200

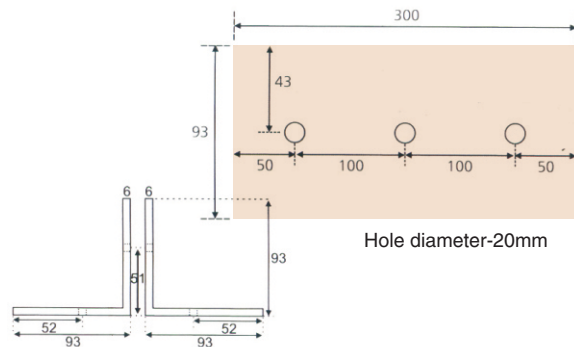
Specifications

Fin Plate :

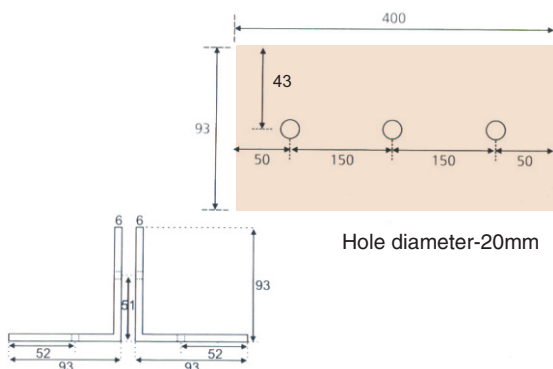
- Teflon washers to prevent damage to glass
- Flat base to hold strongly with floor or ceiling
- To hold fin with Ceiling or Floor



KZ-FP-300



KZ-FP-400



POINT SPIDER FITTING

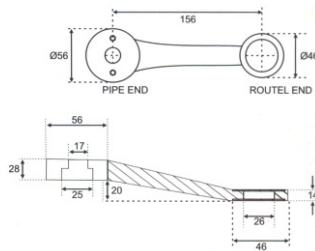


KZ-SFP-2221

Specifications

One Way Spider :

- Attached to a fixed structure
- Installed with articulated routels
- Designed for holding with a fixed structure
- Flexibility in installation
- Stainless Steel grade 316
- To hold glass at one point without fin

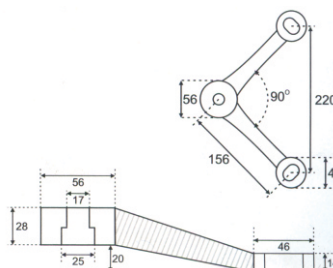


KZ-SFP-2222

Specifications

Two Way Spider-90°:

- Attached to a fixed structure
- Installed with articulated routels
- Designed for holding with a fixed structure
- Flexibility in installation
- Stainless Steel grade 316
- To hold two glasses without fin at 90°



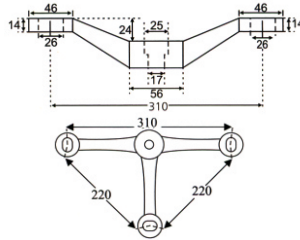
POINT SPIDER FITTING

KZ-SFP-2223

Specifications

Three Way Spider:

- Attached to a fixed structure
- Installed with articulated routels
- Designed for holding with a fixed structure
- Flexibility in installation
- Stainless Steel grade 316
- To hold three glasses without fin

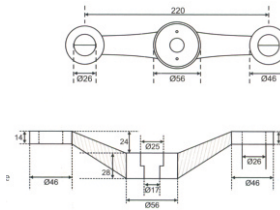
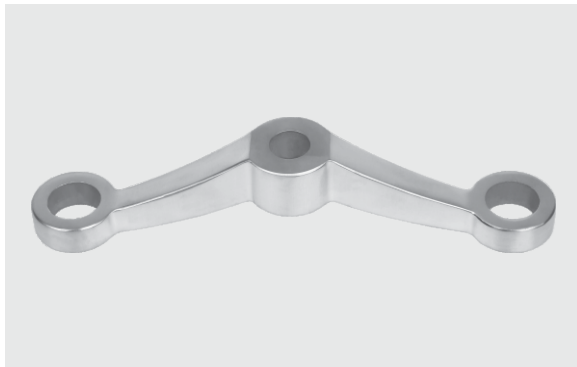


KZ-SFP-2222-A

Specifications

Two Way Spider-180°:

- Attached to a fixed structure
- Installed with articulated routels
- Designed for holding with a fixed structure
- Flexibility in installation
- Stainless Steel grade 316
- To hold two glasses without fin at 180°

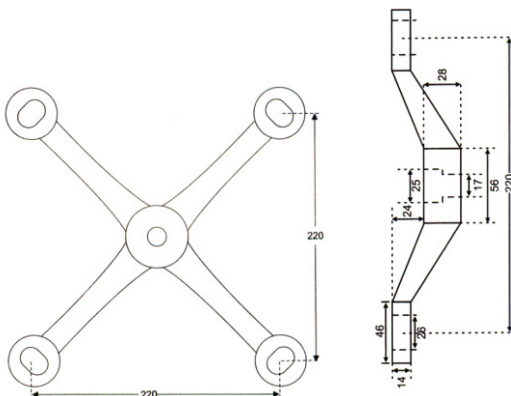


KZ-SFP-2224

Specifications

Four Way Spider:

- Attached to a fixed structure
- Installed with articulated routels
- Designed for holding with a fixed structure
- Flexibility in installation
- Stainless Steel grade 316
- To hold four glasses without fin



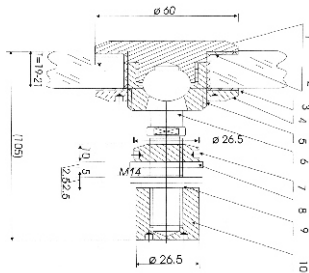
ROUTELES

KZ-AFB-60 ARTICULATED ROUTELS FOR SPIDERS

Specifications

Articulated Routel:

- Flat head bolt
- Teflon washers to prevent damage to glass
- Stainless Steel grade 316
- To use along with spider

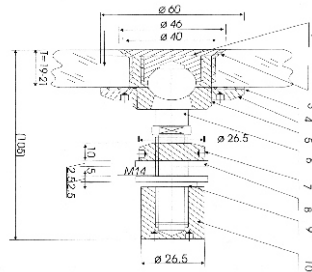


KZ-AFB-CS ARTICULATED ROUTELS FOR SPIDERS

Specifications

Articulated Routel:

- Countersunk head bolt
- Teflon washers to prevent damage to glass
- Adjustable upto 15mm thickness glass
- Stainless Steel grade 316
- To use along with spider

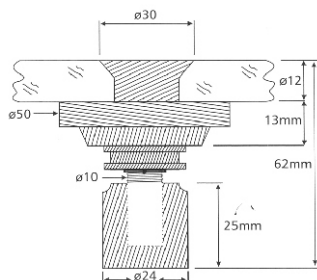


KZ-FB-CS FIXED ROUTELS FOR SPIDERS

Specifications

Fixed Routel:

- Countersunk head bolt
- Teflon washers to prevent damage to glass
- Adjustable upto 15mm thickness glass
- Smaller in size
- To use along with spider

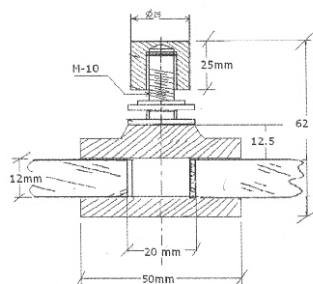


KZ-FB-50 FIXED ROUTELS FOR SPIDERS

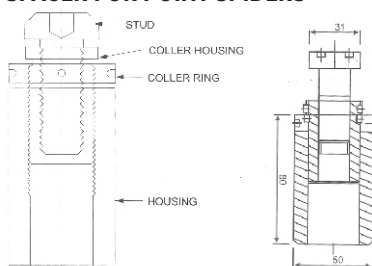
Specifications

Fixed Routel:

- Countersunk head bolt
- Teflon washers to prevent damage to glass
- Adjustable upto 15mm thickness glass
- Smaller in size
- To use along with spider



KZ-SCB-60 SPACER FOR POINT SPIDERS



TWO-WAY AUTOMATIC DOOR MACHINE

KZ-AFS



- A.** With sophisticated technology, the microcomputer controller ensures fast and accurate detection of the door leaf (such as its size and weight), and sets its optimal operating parameters to maintain the optimal running status.
- B.** With DC brushless motor is applied, it is high efficient with large torque and long service life. In addition, the motor is assembled with an electromagnet. When the door is being locked, the locking force can be up to 100kg.
- C.** The worm and gear are assembled in the reduction gear box to realize steady running and ultra-quiet operation with helical teeth transmission.
- D.** Remote control points are designed to achieve convenient switch from normal use to special function.
- E.** Standby power equipped enables the door motor to automatically run up to 5 hours when the power supply is cut off.
- F.** It is convenient to install and buried under ground with two-way regression, and the zero position can be adjusted to the same position through the control system.
- G.** The door control is optional with remote monitoring the sensor.

Door width	Less than 1400mm
Door weight	Less than 150kg
Working procedure	Opening signal - unlocking control - open brake the door - hold open - automatic close - buffer - lock
Automatic opening angle	Adjustable bi-wards, 90°
Opening hold	Adjustable 0x-30 seconds
Opening rate	Adjustable 3-7 seconds
Closing rate	Adjustable 3-7 seconds
Remote-control functions	Cipher code wireless remote-control Opening, remote-control opening
Automatic protection against overloading	Applied, using an electronic system to protect the circuit
Intelligent protection against obstacle	Applied, using an automatic revolving door protections systems
Alarming against error	Unapplied
Intelligent overheating protection	Applied, using an automatic electronic circuit
Closing buffer	Applied
Electric lock control	Applied
Locking torque adjustment	Applied
Opening buffer	Applied
Power supply	AC220, AC14V
Input power static/maximum	6w/45w average power
Dimensions of the main engine	340 L x 200 H x 80.5 (Thickness)

SWING DOOR OPERATORS (Ultra Quiet)

KZ-ADC

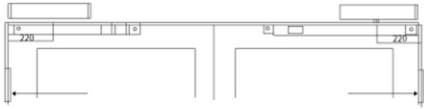
- A With the technology of encoder, brushless motor, and worms and gears, ultra-quiet operation is achieved.
- B With multi-functional interface and versatile remote control technology, the functions of double-door interlock and position feedback, etc. are realized.
- C Push-and-open function and safety protection function (preventing the door from counterclockwise closing when it is blocked) are designed.
- D It can be matched with manual remote control, sensors, buttons, and door controls, etc.

PRODUCT FEATURES

- A. Providing optimal solutions for the automatic 90° side-hung doors, and enabling the door to be a kind of convenient service rather than a barrier to the modern building system.
- B. It can be installed on the standard doors that weight up to 120kg and are 1200mm in width. And the door-opening angle can be adjusted. Compared with other famous products, it is more convenient to install and use, and can automatically regulate the operating device of side-hung doors. Apart from that, it tapped a brand-new application field with its doorframe system not only applicable to large-scale public buildings but also offering an optimal solution to the buildings and houses that don't have structural barrier. What is more, its ultra-quiet operation enables it particularly suitable to the noise-sensitive places (such as the door of operation rooms, hospital passageways, senior clinic, office buildings, business hotels, senior apartment buildings and leader's office etc.
- C. It is very light (about 4.5kg) and delicate, and can be directly installed on the door or doorframe.
- D. As a top-grade product with classic design made by the engineers of Kanz Company, Kanz series product has many useful standard functions, including push-and-open function, and safety protection function (preventing the door from counterclockwise closing when it is blocked), etc and can be used in any situations. Especially with its incomparable price performance ratio and matching with door controls, remote monitoring sensors, the product can absolutely ensure you worth it.



Installed on the doorframe, opening inward



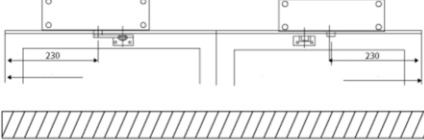
Installed on the doorframe, opening outward



Installed on the side of the hinge, on the door, opening inward



Installed on the opposite side to the hinge, on doorframe, opening outward



1. Applicable to all types of vertical hinged doors, left-open door or right-opened door. no limitation of door width also applicable to 2-leaf vertical hinged doors.
2. Electrical wires can be put in through soft conduit from outside (surface mounting), or through holes of the floor (concealed mounting)
3. Installation can be after completion of construction or after decoration, it normally doesn't damage decoration.
4. Installation takes no more 6 hours, or even 1.5 hours if it is carried out by skilled workers.

Applicable to	Vertical hinged door of all materials
Door width	Less than 1200 mm
Door weight	Less than 120kg
Working procedure	Opening signal - Unlocking control - open-brake the door-hold open-automatic close-buffer-lock
Automatic opening angle	80° - 130°
Automatic opening angle	0x-60 second
Opening hold	3-6 second
Opening rate	Adjustable 3-6 seconds
Closing rate	Adjustable 3-6 seconds
Remote-control functions	Cipher code wireless remote-control opening, remote-control opening hold, remote-control closing and remote-control against opening
Automatic protection against overloading	Unapplied
Intelligent protection against obstacle	Applied
Alarming against error	Applied
Intelligent overheating protection	Applied
Closing buffer	Applied
Electric lock control	Continuously adjustable
Locking torque adjustment	Applied
Opening buffer	Applied
Power supply	AC220, AC14V/DC20V
Input power static / maximum	6W/45W
Dimensions of the main engine	450L x 80H x 80Thickness



AUTOMATIC SLIDING SYSTEM

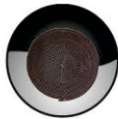
KZ-4200



Remote



Sensor



Timing belt



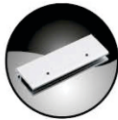
Trolley pulley, tension adjusting device



Door stopper



Up&down connection bracket



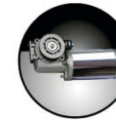
Glass clamp



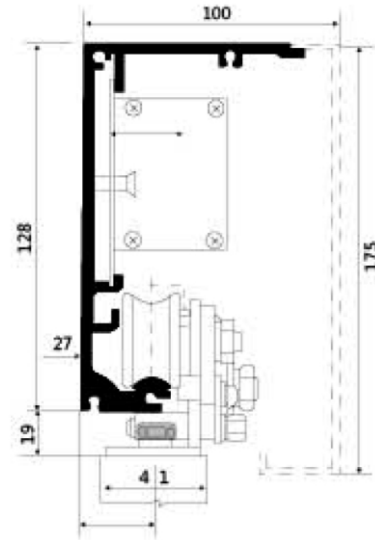
Hanging group, roller and hanging parts



Control module



Motor



Aluminium Rail Size

Product Features

The microcomputer control adopts German technology, so it can detect weight and size of the door quickly and accurately. Optimal parameters can be set for it to keep the door in the best condition. Running condition of the door can be remembered. Besides, it has adjusting function and highly intelligentized.

The remote control function, safe and reliable.

The wide power source, low power consumption, efficiency high-performance, is stable.

Adopt brushless DC motor and turbine worm reducer, high torque, high efficiency, long operating life.

Best humanity design, good safety, has encounter obstacles protection detection function.

Motor lock function, when door fully closed, remain closing, need not electric (switch) lock.

Half open function, can set opening position freely. Cooperate with various of access control modes.

The high quality post-sale service.

Technical Specification

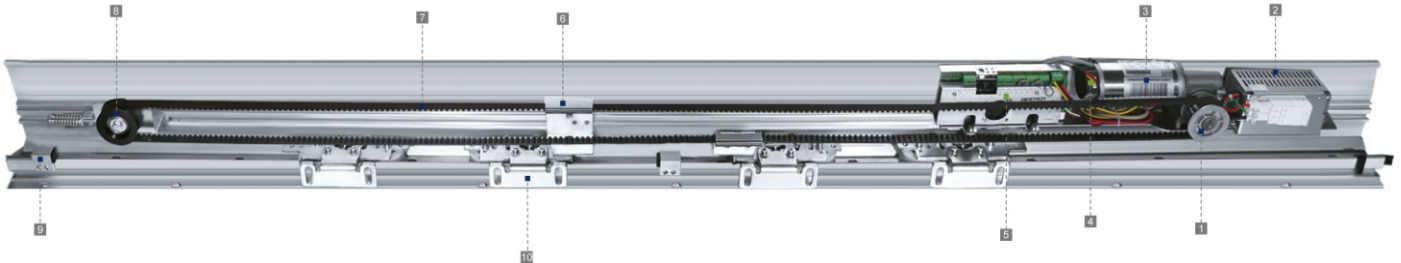


Type	Single door	Double door
Model	KZ 4200	KZ 4200
Loading capacity	>120kgs	>2x120kgs
Power supply	AC 160-250V 50-60Hz	
Sensor type	Compatible with sensors of various models	
DC Motor	DC 24V 2200 RPM Geared Motor (60W/90W)	
Standard rail length	2000mm	4000mm
Minimum clear width	500mm	1000mm
Maximum clear width	2000mm	3500mm
Opening width	100% (Full open)/sec (adjustable)	
Opening speed	100mm-500mm/sec(adjustable)	
Closing speed	100mm-500mm/sec(adjustable)	
Hold open time	0-10sec/Adjustable)	
Force needed for manual opening and closing	<40N	<N50
Ambient Temp	Ambient Temp -20°C-----+50°C	

SWING SLIDING DOOR SYSTEM

KZ-6000

New model KZ-6000 sliding door system offers the perfect solution for all applications and service requirements.



FLEXIBLE, SIMPLE, MODULAR

Modular design

The modular design of the HD 200 provides an ideal basis for the implementation of new ideas and individual concepts. We have also opened up a new dimension with the control system, the modular control system comprises of the basic module (BM) and the function module (FM). When you want to expand the functionality of your system, upgrading in accordance with individual customer requirements may be carried out without problem. Mini-Drive-Unit, industrially tested and equipped with all the necessary electrical and electronic components.

Integrated power

With its extra-powerful motor and a dynamic driving phase control, the integrated Power-Drive system ensures safe and reliable operation. And it can readily cope with sliding door weights of up to 2x160kg per door panel weight.

A system for the future

You have the security derived from our decades of experience in the automatics business. The HD200 corresponds to the standards and safety regulations.

Exceptional cost-efficiency

HD200 with a drive system of modular design, offers easy assembly and installation, simple maintenance.

Accessories

Provides program switches, sensors and components.

Additional Equipment

Height	100mm
Depth	180mm
Opening and closing force max.	150N
Opening speed incremental setting	10-70cm/s
Closing speed incremental setting	10-50cm/s
Hold open time	0-180sec.
Mains Voltage, frequency	230V.50/60Hz
Power consumption	250W
International protection	IP 20
Tested according to low-voltage guidelines	■
Manufacture according to ISO 9001	■
EU CE certification	■

Door Parameters HD 200

1-panel sliding door	
■ Transit width LW	700-3000mm
■ Door panel weight, max	1x200kg
2-panel sliding door	
■ Transit width LW	800-3000mm
■ Door panel weight, max	2x160kg

Additional Equipment

Electronic mechanical locking device	<input type="checkbox"/>
Manual lock release for electronic mechanical locking device	<input type="checkbox"/>
Light barriers	<input type="checkbox"/>
Rechargeable battery pack (Emergency opening Emergency closing)	<input type="checkbox"/>
Module for coupling to EIB building management systems	<input type="checkbox"/>
Remote control	<input type="checkbox"/>

Basic Module (BM)

Modular design	■
Microprocessor-controlled function programs	
■ Off	■
■ Automatic	■
■ Permanent open	■
■ Partial open	■
■ One-way open	■
Emergency off	
Self-learning	■
Automatic reversing	■
Connection for light barriers (max.2pairs)	■
Setting of basic parameters via integrated display and push buttons	■
Emergency opening or closing (with use of battery pack)	■
24V output for external consumption	■
Motor self-lock function	■
■ Standard □ Optional	



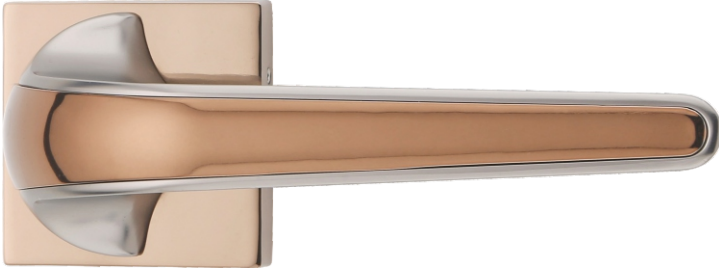
handles
for a
lifetime



MORTISE DOOR HANDLES

KZ-9901

LUXURY LINE COLLECTION



● PVD ROSE GOLD



● SILVER SATIN

● ANTIQUE

KZ-9902



● PVD ROSE GOLD



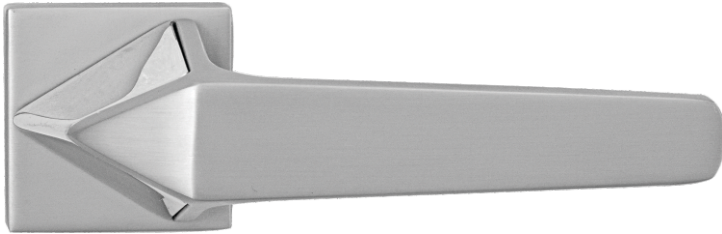
● SILVER SATIN



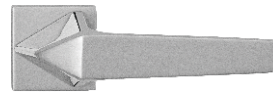
● ANTIQUE

KZ-9903

LUXURY LINE COLLECTION



● PVD ROSE GOLD



● SILVER SATIN

● ANTIQUE

KZ-9904



● PVD ROSE GOLD



● SILVER SATIN



● ANTIQUE

KZ-9905

LUXURY LINE COLLECTION



● PVD ROSE GOLD

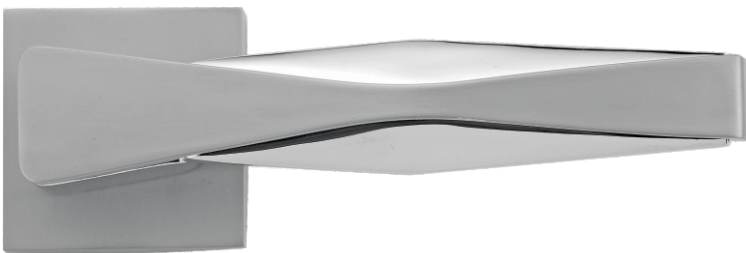


● SILVER SATIN



● ANTIQUE

KZ-9906



● PVD ROSE GOLD



● SILVER SATIN



● ANTIQUE

KZ-9908

HERITAGE LINE COLLECTION

Finish Available : Antique

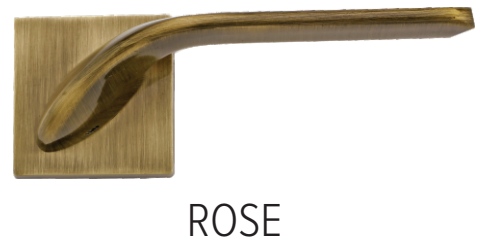
CY 10"



KZ-8001

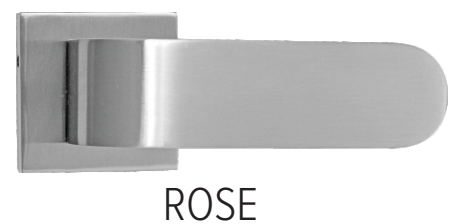
SILVER LINE SERIES

Finish Available : Antique / SS



KZ-8002

Finish Available : Antique / SS



KZ-8003

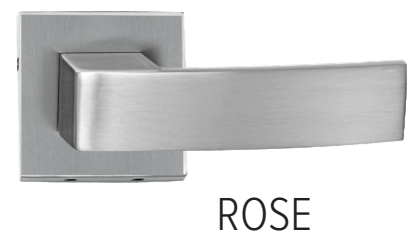
SILVER LINE SERIES

Finish Available : Antique / SS



KZ-8004

Finish Available : Antique / SS



KZ-8005

SILVER LINE SERIES

Finish Available : Antique / SS



CY 10"



CYS 8"



ROSE

KZ-8006

Finish Available : Antique / SS



CY 10"



CYS 8"



ROSE

KZ-8008

SILVER LINE SERIES

Finish Available : Antique



CY 10"



CYS 8"



ROSE

KZ-8009

Finish Available : Antique / SS



CY 10"



CYS 8"



ROSE

KZ-8010

SILVER LINE SERIES

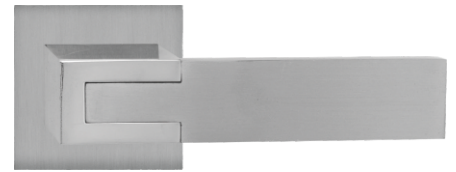
Finish Available : Antique / SS



CY 10"



CYS 8"



ROSE

Great
design
Come in
all sizes



KZ-6001

SILVER LINE SERIES

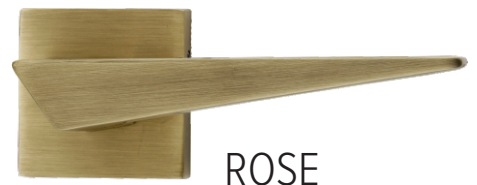
Finish Available : Antique / SS



CY 10"



CYS 8"



ROSE

KZ-6002

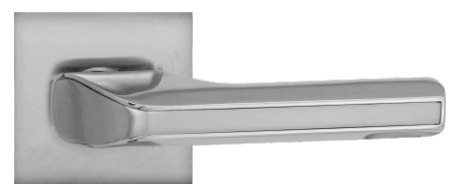
Finish Available : Antique / SS



CY 10"



CYS 8"



ROSE

KZ-6003

SILVER LINE SERIES

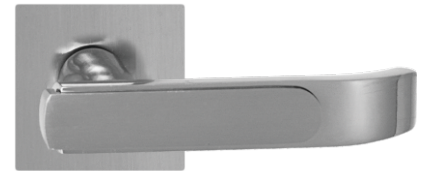
Finish Available : Antique / SS



CY 10"



CYS 8"



ROSE

KZ-6004

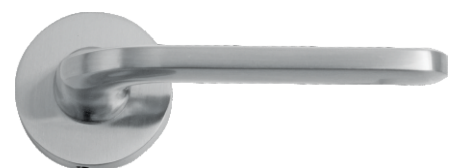
Finish Available : Antique / SS



CY 10"



CYS 8"



ROSE

DOOR ACCESSORIES

KZ-DST

DOOR STOPPER

Finish : SS, Antique



KZ-TBT

TOWER BOLT

Sizes : 4, 6, 8, 12, 18, 24 inch

Finish : SS, Antique



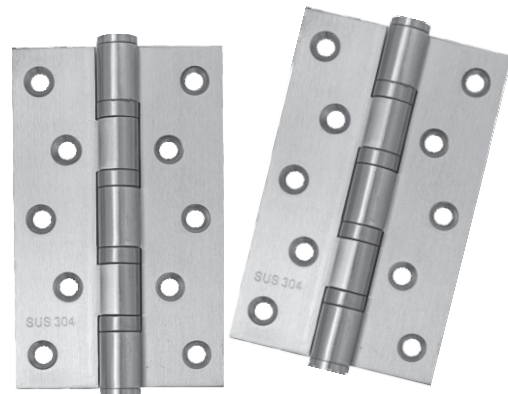
KZ-BH 5

BEARING HINGE

SS (304 Grade)

Size : 100 x 75 x 3mm (4")

125 x 75 x 3mm (5")



KZ-MPL-32

MULTI PURPOSE LOCK

22mm Square With Normal Key



KZ-MPL - 21

MULTI PURPOSE LOCK

With Ultra Key SS (304)



KZ-CB - 25

CUPBOARD LOCK

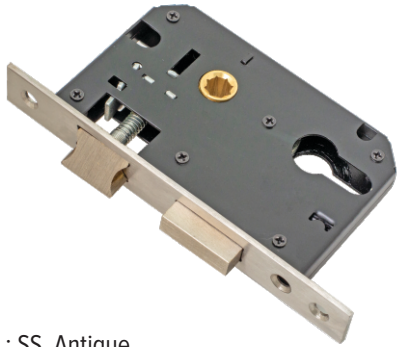
With Ultra Key



LOCK BODY SERIES

KZ-LB-CYS

LOCK BODY 8"



Finish : SS, Antique

KZ-LB-CY

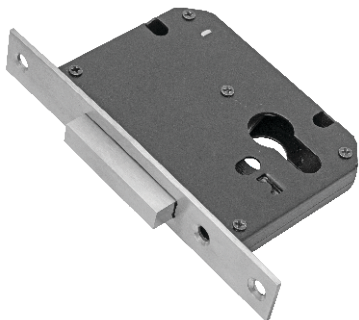
LOCK BODY 10"



Finish : SS, Antique, PVD Rose Gold

KZ-LB-DL

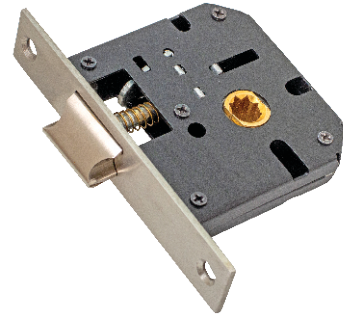
DEAD LOCK WITH TWO ZINC EXCUTION



Finish : SS, Antique, PVD Rose Gold

KZ-LB-BL

BABY LATCH



Finish : SS, Antique, PVD Rose Gold

MORTISE LOCK ULTRA CYLINDER SERIES

BOTH SIDE KEY CYLINDER



KEY & KNOB CYLINDER

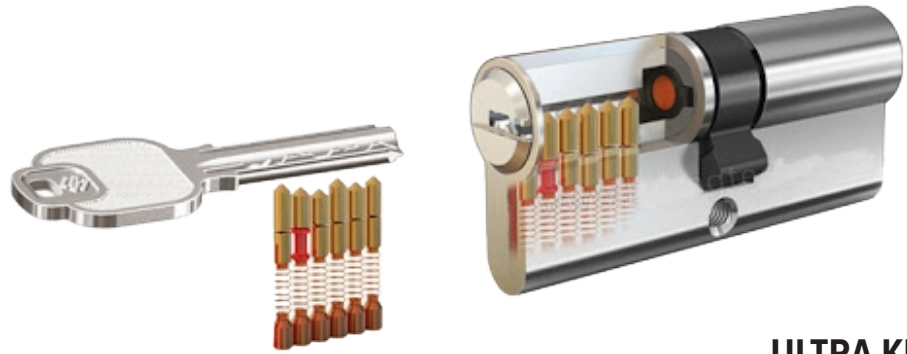


KNOB CYLINDER



• **SIZE AVAILABLE** : 60, 70, 80, 90, 100mm • **FINISH** : PVD Rose Gold, Antique, SS

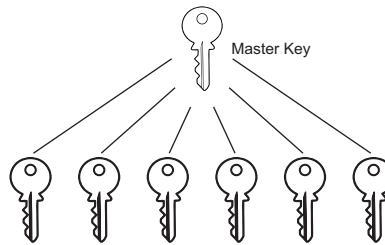
CYLINDERS



ULTRA KEY

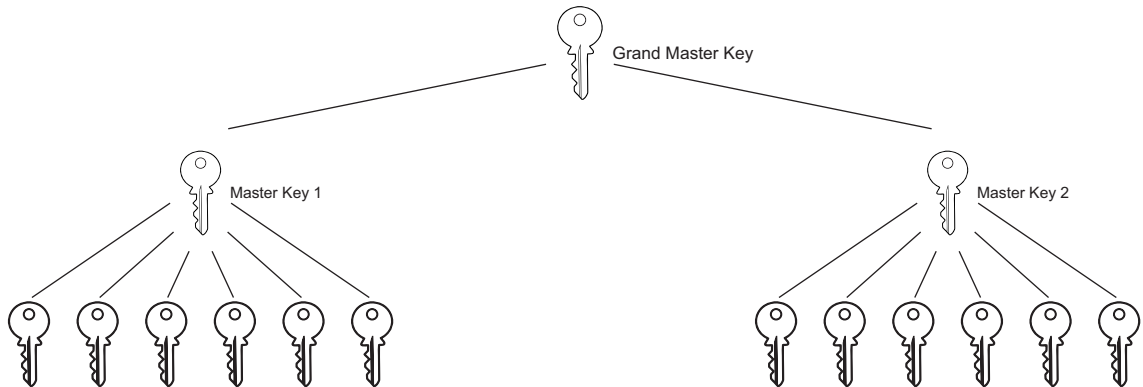
MASTER KEY SYSTEM

Master key is a key which can open all the other cylinders made under that system It's leader key to all the other keys in the system. (Maximum 40 cylinders)



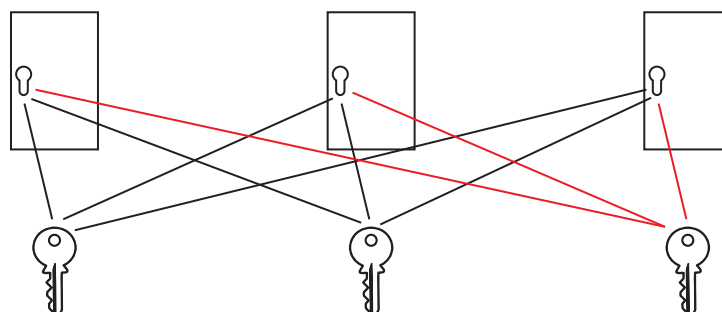
GRAND MASTER KEY SYSTEM

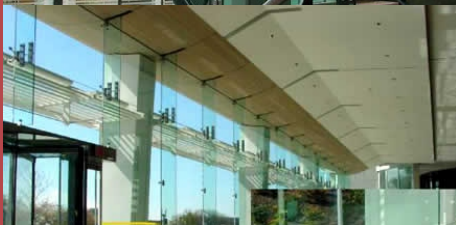
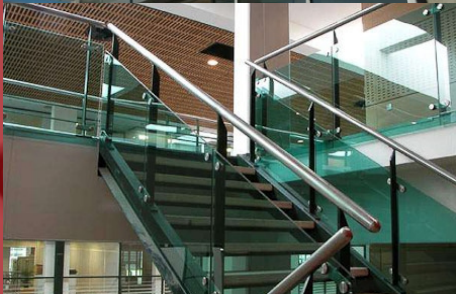
A grand master key is a key which can open group of master keys assigned under the system.



COMMON KEY SYSTEM

Made to order we provide common set of keys for any nos. of cylinders ordered by customer.





SALES & SERVICES:

- ANDHRA PRADESH • CHATTISGARH • DELHI-NCR • GUJARAT • HARYANA
- JAMMU & KASHMIR • MADHAYA PRADESH • NEPAL • ODISHA
- PUNJAB • RAJASTHAN • TAMIL NADU • UTTAR PRADESH • WEST BENGAL
- MAHARASHTRA • KARNATAKA • KERELA

HEAD OFFICE:

ROYAL INDIA HARDWARE SOLUTION, PLOT NO. 09, BHARAT NAGAR MAIN ROAD,
ASHOK VIHAR PHASE-IV, DELHI-110052

TRADE INQUIRY: 729 33 444 44, 729 33 888 88, PHONE: 011-45019635

WAREHOUSE:

C-50, PHASE-II, MAYAPURI, NEW DELHI-110064

WORKS:

I-132, SECTOR 2, DSIDC INDUSTRIAL AREA, BAWANA, NEW DELHI-110039



AN ISO 9001:2008
COMPANY
PCMS/QMS/1429-2010